



SGS Newsletter

Seeley Genealogical Society Est. 1965



HISTORY ★ FAMILY ★ RESEARCH

Issue 174-2017-04/November/2017

Research Solves Long-Time "Brick Wall" Challenge

Story by Jim Seeley, Former SGS President

In the early 1800s, in sparsely populated Bradford County, PA, lived TWO William Seeleys, only about 10 miles apart, of similar age, each having a father named Samuel, and each

IN THIS ISSUE:

TWO: The Latest News and Information from SGS President Lynda Simmons

THREE: Finding Your Family History in Your Genes

FOUR: Reunion Membership Meeting Minutes

EIGHT: Children's Ancestry Corner

TWELVE: Standing SGS Committees

TWELVE: SGS Queries

FIFTEEN: Contact Information for the SGS Executive Board

Samuel from Orange County, NY.

Each of these Williams' descendants believed their ancestor's father was the Samuel Seeley (SGS# 501) buried in the



Revolutionary War Fitzsimmons Cemetery in Southport, NY, a suburb of Elmira just across the state line from Bradford Co., Pennsylvania. Their belief was primarily based on the proximity of each William's home from Southport.

One William lived in Wells Township, the other, my ancestor, in Ridgebury Township, both in Bradford Co., PA.

I am excited. Thanks to Research

Report #JS-1 by Frederick C Hart, Jr., CG, FASG, FGBS of Aug. 31, 2017, I now believe the "Two William Problem" has been solved. Hart traced the migration route of my ancestor Samuel Seeley from Orange County, NY, to Avon (formerly Hartford), NY (by 1800), then to Sodus Point, NY (on Lake Ontario by 1810), and then Samuel's son William's migration from Sodus Point, NY, to Elizabethville, NY (by 1820), and then to Ridgebury, Bradford, PA arriving before 1830.

This migration corresponds to the Samuel Seeley (SGS#467) and his son William Seeley (SGS#1595).

My line then becomes: me - James¹¹, Clyde H.¹⁰, James A.⁹, James⁸, William⁷,

See Two Williams Problem Solved Page 3

The Seeley Genealogical Society Newsletter

is published quarterly by the
Seeley Genealogical Society

Editors

Paul Taylor
Jesse Crisler

Address newsletter correspondence to:
SGS Newsletter Editor
Paul Taylor

See Contact Info on Page 15

Announcements

The SGS Newsletter is published every February, May, August, and November. Announcements are published for free and are due to the editor by the 15th of the month preceding publication.

SGS Mission Statement

The Society shall engage in research, study, verification, discussion, collation, publication, dissemination, and preservation of Seeley information for the Society, for the education and benefit of its members and for posterity.

Membership

Membership is open to anyone interested in genealogy, history or biography; amateur or professional. Although the name Seeley refers to one family surname, SGS counts among its family those with surnames spelled a variety of ways such as: Seeley, Seely, Seelye, Sealy, Sealey, Seley, Selye, Seale, Seelee, Seela, Cieley, Cealy, Cilley, etc.

Membership Dues

Effective Oct. 1, 2011 SGS Membership dues are \$10 per year, \$18 two years, \$25 three years, or \$36 five years. Lifetime memberships are \$125. (Dues are in U.S. dollars and the membership year runs from Oct. 1 to Sept. 30) Pay all dues to:

SGS Membership Chair
Marie Seelye

See Contact Info on Page 15

Seelye Research Center

is co-located with the Seelye Mansion in Abilene, KS. For more information, contact:

Seelye Research Center, Director
Terry Tietjens

See Contact Info on Page 15

SGS International Reunions

are held every two years. The next one is scheduled for 2019, in San Diego, CA. Please advise the editor if your branch or family has plans for a sectional or local reunion in the interim. Others might like to know about it.

Editorial Position

The editorial opinions expressed in this newsletter are the opinions of the writers and do not necessarily reflect the opinions of the Society or the editors, nor are the Society or its editors responsible for errors of fact or opinion. Proved errors will be corrected.

SGS PRESIDENT'S REPORT

Seeley Genealogical Society President, Lynda Simmons

It was so good to see so many of you at our SGS Reunion in Parkersburg, West Virginia! We had such a good time and learned so much! We are already planning for our 2019 Reunion in San Diego. Please look forward to joining us there! It is always so much fun to see our Seeley cousins, regardless of how they spell their name, and learn new information about our ancestors. We will let you know the dates as soon as we can. Please plan to come!

All our memories of the 2017 SGS Reunion are contained in our 2017 Reunion Souvenir Book.

LeAnne Seely is creating this wonderful book for us. It is a history of SGS for the last two years as well as complete information about the reunion. If you were like me, you forgot to preorder a Souvenir Book while at the reunion. There is still time to order your copy. They are only \$35.00. Send me a check to reserve your copy of this great book!

SGS wants to thank Paul Taylor for the many great Souvenir Books he has created for SGS! They are so very good! As the Chairperson of the Communication Committee, Editor of the Newsletter and now facilitating the update of our SGS Website, Paul is grateful to LeAnne for taking over the Souvenir Book, as are we all. I want to personally thank Paul for the quality and quantity of work he has given and does give to SGS.

There are many exciting things happening in our Society. Logan Seelye has started updating our SGS Website. There is lots to do and so much information to transfer that it will be a few months before it

is up and running, but we are so happy to begin the process.

A big "Thank You" to Chris Havnar and her dear, late husband

Jerry for all their excellent work on our present site. We really appreciate all of their hard work and many years of service for SGS! Thanks, Chris!

We are excited about the progress in research on the Seeley line. Genealogist Apryl Cox has been researching on Augustus Seeley and Obadiah Seeley's ancestry in America and England. Apryl found new information on Augustus, Obadiah, William Seeley, Alice Chamber, William Bissell, Alice Bloxish, and their families. These research findings will be published in this newsletter and future newsletters as needed.

Jim Seeley, also, has exciting research findings. Jim has wondered for years about whether William Seeley who died in Ridgebury, Bradford County, PA was the same William Seeley who had lived in Wells, Bradford County, PA. With the help of genealogist Frederick C. Hart Jr, it was determined that they were two different men. Jim is glad to know this and has made the research available to SGS.

SGS is always so grateful for the work of our great officers. They are listed on the back page of the



Please See President's Report Page 11

CONTINUED From Page 1: Two Williams Problem Solved

Samuel⁶, Joseph⁵, Samuel⁴, Jonas³, and immigrant Obadiah². The number after each name corresponds to the generation number assigned by the SGS Publications.

William A. Seeley of Wells Township, Bradford Co., corresponds to SGS# 1692 and his father Samuel Seeley to SGS# 501. This Samuel's line is Nathaniel⁵, Ebenezer⁴, Jonas³, and Obadiah². This was the line originally recommended by Clifford L. Stott, CG, in his Research Report #9642-Hoyt, dated Jun. 3, 1998, for a descendant of William A. Seeley of Wells, PA. A copy of Stott's report is on file at the Seelye Research Center (SRC) in Abilene, KS. I have provided a copy of the Hart research report to the SRC as well.

My many thanks to professional genealogists Cliff Stott and Fred Hart. They have not only made significant contributions to SGS understanding of the life and ancestry of immigrant Obadiah Seeley, but they also helped me solve my "Two William" problem.

For descendants of these two William Seeleys, I would be happy to answer any questions if the answers may be found in either the Hart or Stott research reports. Contact me at jrseeley36@gmail.com.

**SGS Reunion 2019
in San Diego**

**Contact SGS President
Lynda Simmons to
find out how you
can help!**



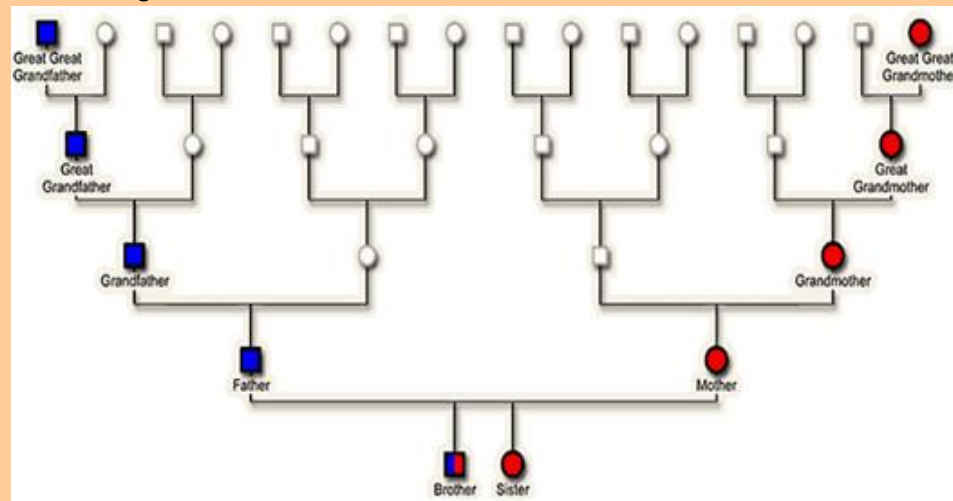
Your Family History Can Be Found in Your Genes

Story by Stephanie Mills Moore

Editor's Note: This is a version of an informative and entertaining presentation given at the 2017 SGS Reunion by Stephanie Mills Moore.

Y-DNA Testing (Ycs) - (males only)

This testing has been utilized the longest & has the best track record. The Y-chromosome is passed from father-to-son and is extremely useful in the study of a surname. It helps determine whether one shares a paternal ancestor with another person alive today; computer algorithms can predict approximately how long ago the common ancestor lived, usually up to five or six generations back.



A male adoptee may find success in discovering his biological surname by testing his Y-DNA. If a woman is interested in discovering more about her maiden name, then she would need to locate a male of that surname family and have him take the **cheek swab** test administered through FamilyTreeDNA (www.ftdna.com). Someone taking the test should pay



Stephanie Mills Moore gave a presentation at the 2017 SGS Reunion about available DNA testing options.

for to test at least thirty-seven markers, or even more, if possible. One can also search the site for a project with one's surname (join for comparisons). The test is \$169, but create an account & look for holiday discounts in the email. A father,

brothers and sons **need not take the same test**, since the results would be the same. Disclaimer: some have discovered that their dad is not their dad! So be prepared for the results.

mtDNA (mitochondrial) – (males & females)

Female ancestors are frustratingly
Please See DNA Research in Genealogy Page 5

SGS General Membership Meeting, June 17, 2017 Draft Minutes

Submitted by Patricia Brooks Palmer, SGS Secretary

SGS President Lynda Simmons called the meeting to order at 9:20 a.m. at the Memorial Church of the Good Shepherd.

Quorum: Kathie Olson, acting parliamentarian, confirmed that a quorum was present.

Welcome: Lynda welcomed all Society members and expressed appreciation for all efforts to promote SGS.

Minutes: Minutes of the Membership Meeting, July 29, 2015, read by Patricia Palmer, SGS Secretary, were unanimously approved.

Website Committee: Paul Taylor, SGS First Vice President

- The amount of data developed on the present website by Chris Havnar and Jerry Havnar is “astonishing.” The body of information found within the website is a “great product” and the content and design are ready for a “refresh.”
- Logan Seeley, grandson of Dan Seeley, who designed the present SGS website, has agreed to redesign the SGS website to present a better “public face” for SGS
- The committee, comprised of Paul, Lynda Simmons, Chris, Walt Seelye, Marie Seelye, Pam Turner, and Linda Crocker, has been charged with website design.
- Final approval of the redesigned website will be forthcoming.
- The platform is WordPress; a standard process will be used for the design of the platform.
- Panes will focus on areas of interest, with tabs and subheadings for information such

as people, places, records, obituaries, membership submissions, etc.

- Additional headings may include queries, SGS research, DNA Lineage Project, news and events (meetings and reunions), archives of SGS Newsletters (excluding those for the last two years), a Join the Society section, Seelye Research Center, history of SGS, FAQs, and Contact SGS.
- Logan will track analytics to determine what people are looking for, and new content will constantly be added for visibility.
- The website will also include photos and a social sharing element enabling individuals to share online.
- The website’s look will be the same on Chrome, Firefox, etc.
- The URL may change, while the website is in the process of redesign, though the first intent will be to retain the present URL.
- PayPal will be included on the site.
- An SGS Members Only section will also be included on the site with members’ names and addresses, Executive Board, Constitution and Bylaws, past Reunion Souvenir Book information, etc.
- Initial contract cost is \$3,000 to Logan Seeley.
- The Newsletter will cover progress of the website redesign progress.
- The committee’s hope is to bring the new website online, research other lines to expand our knowledge base, and use the website as a tool to expand the

membership of SGS.

- Lynda thanked Paul for his hard work and dedication to this project as well as for much else that he does for SGS.

Treasurer’s Report: Margaret Petersen

- An Excel spreadsheet is used for all income and expenses on a yearly basis.
- All notes, receipts, deposit slips, monies, and any and all correspondence are copied and originals retained for the SRC.
- SGS has a State of Utah registered 501(c)(3) designation.
- Margaret defined all elements of the treasurer’s report including payments for souvenir books, newsletters, reunions.
- Margaret thanked Sue Craven for her dedication in mailing copies of the Newsletter to those members who wish a paper copy.
- SGS Certificates of Deposits, held at Patriot Bank, have matured at \$77,599.02, with a return rate of .65%.
- As asked at the 2016 Executive Board meeting in Abilene, Margaret researched the possibility of a higher rate of return, settling on Mountain Credit Union under the following conditions: a \$5.00 initial deposit, 1 CD (18-month term) @ 1.35% rate with initial deposit of \$5,168.14, and 1 CD (5-year term) @ 2.75% with initial deposit of \$72,425.88, as of June 15, 2017.
- Margaret noted that SGS is doing well financially because of the Johnson bequest, changing the

Please See Membership Meeting Minutes Page 5

CONTINUED From Page 3: DNA Research in Genealogy

difficult to trace because of the fact that they traditionally change their surnames at marriage. So for many of us anything that may shed light on our female ancestors' origins is welcome. The value of mtDNA testing lies in the simple fact that if two people share an exact mtDNA sequence, then they descend from a common female ancestor.

Because mtDNA changes (mutates) very slowly and can be passed down virtually unchanged for thousands of years, one's mtDNA may be identical to that of very distant direct maternal ancestors. MtDNA was inherited from one's mother and from her mother and from her mother, etc. No matter how far back in time one goes, there is only one direct maternal ancestor in each generation and she is the one responsible for passing on mtDNA. However, mtDNA will only be passed to the next generation through daughters.

MtDNA testing can be done for a small section of the genome called the control region, which usually includes the segments HVRI, HVRI 2, and/or 3, or for the full molecule (16,569 bases). The goal is to determine a shared ancestor with these matches. If one takes the test, one's grandmother,

mom, maternal aunts, sisters, brothers, and children will *not need to take it*, for the results will be the same. The cost is \$199 for a full sequence *cheek swab scraping* mtDNA kit from FamilyTreeDNA; here again, create an account and wait for holiday discounts.

atDNA (autosomal) - (males & females)

Autosomal or atDNA tests all genetic lines, paternal and maternal—that's 700,000 markers vs. 76—and it is the new personal favorite of genealogists! AtDNA is found within the remaining 22 pairs of nuclear chromosomes, called autosomes.

Autosomes are shuffled in each generation, contributing an equal amount of genetic material from each of two parents (50% + 50%). Obviously, since only half of one's DNA is passed to offspring, this also means that the other half is lost, which in turn means that within a few generations, most, if not all, of the autosomal DNA of an ancestor might not be detected the ancestor's posterity.

AtDNA does not follow a clear and straight path of inheritance, as Y-DNA (Ycs) and mtDNA lines do.

However, current testing provides a survey of one million or more sites on a person's nuclear genome. This information is helpful in identifying recent cousins within the last five generations or the ethnic origins of one's family tree.

Companies like 23andMe, FamilyTreeDNA, Geno 2.0, and Ancestry all offer autosomal testing for genealogical purposes @ \$99 (create an account and wait for holiday discounts). Each company offering these *saliva collection* tests provides numerous tutorials and aids on its website to assist in interpreting results. Additionally, 23andMe offers information about medical predispositions and traits as well as website features to help one get in touch with cousins.

Therefore, it is one thing to be genetically related and quite another to be genealogically related. An ancestor can easily appear on a person's pedigree chart without having contributed any DNA to that descendant. Siblings are encouraged to take their own tests because they may be connected to others that another sibling is not linked to. Questions? Get in touch with me at moore4440@msn.com/719-930-1640.

CONTINUED From Page 4: Membership Meeting Draft Minutes

newsletter to electronic delivery for most members, the 501(c)(3) designation, and the CD change in rate-of-return.

- Kathie moved to approve the Treasurer's Report, Wesley Waring, Director-at-Large seconded the motion, and the report was unanimously approved.
- Lynda thanked Margaret for her

work as SGS Treasurer.

Appreciations: Lynda thanked Jesse Crisler, SGS Second Vice President, for his ongoing editing of the Newsletter and articles included in Reunion Souvenir Books and his service as chair of both the Nominating Committee and the Awards and Recognitions Committee and Lou Ann Crisler for the songs she has written for past reunions and

"Seeley Doodle," written for the present reunion. Lynda also reiterated the Society's gratitude for Paul's work as Newsletter Editor and chair of the Publications Committee.

Chief Genealogist's Report:

Linda Crocker

- As chief genealogist, Linda answers queries, updates the SGS Ancestral File, submits SGS

Please See Membership Meeting Minutes Page 6

SGS is a Title 501(c)(3) Organization. All Donations are Tax Deductible.

CONTINUED From Page 5: Membership Meeting Draft Minutes

information to the Newsletter, answers queries from the SGS Facebook page, works in conjunction with Chris to update the Seeley surname index (all spellings), and compiles in an ongoing process basic data on all Seeley lines.

- The Ancestral File has 50,872 entries (surname index 34,525 and other 16,347)
- Basic data of all Seeley surnames compiled for SGS is stored on the Cloud.

Seelye Research Center and

Library: Terry Tietjens, SGS Director-at-large

- 15,000 people tour the Seelye Mansion and Patent Medicine Museum each year, with tours occurring every day.
- Terry considers it an honor to be a director of SGS, noting his appreciation to Marshall Seelye for setting up the Seelye Research Center in 1996.
- Helen Seelye thought family history was particularly important.
- Ruthetta Hansen, SGS Director-at-large, is also a member of the board of the Seelye Foundation, supporting the goals of the Seelye Mansion and Patent Medicine Museum.
- Support for SGS continues via the Seelye Research Center and Library in Abilene, KS.

Research Goals Committee

Report: Wesley Waring, SGS Director-at-large

- Research completed for SGS by Apryl Cox was completed in June 2015 with a summary issued in July 2015.
- In February 2016 Cox also

reported on research in Warwickshire, England, New Jersey, and New York records on Sarah Seelie, Obadiah Bruen, and Augustus Seeley.

- Subsequently, Cox presented two additional reports in March/April 2016 and July 2016, having found the 1608 marriage of William Seeley and Alice Bissell.
- In regards to Y-DNA, members should consider how to approach and coordinate those who have been tested and develop a process to understand testing results.
- Lynda, Wesley, Walt, and Linda, members of this committee, are looking for SGS members who might consider taking on the other elements of inquiry noted in his report.

Y-DNA Report: Linda Crocker (for Walt Seelye)

- Two Y-DNA testers did not give definitive information helpful to determining more information for the Obadiah, Robert, or Nathaniel lines.
- A mitochondrial DNA database that provides analysis of mtDNA might be interesting, but since neither Robert nor Nathaniel had daughters, there would be baseline issues.

Library Report: Pam Turner, SGS Librarian

- Thirty years of the Newsletter have been scanned.
- Bookends have been purchased and installed in the library.
- Books that have been recovered are now relabeled to match their location in the SRC.
- Family and other photos not properly sorted, identified, and labeled are being identified and

labeled.

- The next twenty years of the Newsletter will be scanned, completing the process of digitizing them.
- Lynda thanked Pam for her dedicated work.

Other Business: Lynda

Simmons

- Lynda noted that every member of SGS is important.
- Lynda led a discussion regarding why SGS is important to members; responses included the importance of family, meeting wonderful people, the SRC, the Newsletter, common research interests SGS reunions, and opportunities for fellowshiping.
- In spite of these positive notes, membership in SGS is 252 members, down from over 400 members in 2010, and it dwindles a little more each year, either because members have died or the have failed to renew memberships; Lynda encouraged members to find one individual to become a new member of the Society, to find ways to increase our own involvement in SGS, and to promote the Society with all it truly has to offer.
- As a Society, we must ask ourselves what we may do to increase awareness of the good work, great people, and opportunities for discovering our heritage that come from participation in SGS.
- Lynda noted that all current SGS officers wish to continue in their positions; there being no further nominations from the floor, present officers were unanimously

Please See Membership Meeting Minutes Page 10

2017-2019 Executive Board Meeting, June 17, 2017 Draft Minutes

Submitted by Patricia Brooks Palmer, SGS Secretary

SGS President Lynda Simmons called the meeting to order at 4:32 p.m.

Quorum: Kathie Olsen, acting parliamentarian, confirmed that a quorum was present.

Elected and Appointed Officers

Attending: Lynda Simmons, Margaret Petersen, Kathie Olsen, Pam Turner, Wesley Waring, Paul Taylor, Linda Crocker, Terry Tietjens, Ruthetta Hansen, Chris Havnar, Patricia Palmer.

Excused: Jesse Crisler, George Seeley, Walt Seelye, and Marie Seelye

Other Members Attending:

James Seeley and John Palmer

Constitutional Questions:

Lynda Simmons

- Every voice is important.
- How important is a voice, but no vote? (Is this worth changing the SGS Constitution?)
- Definition of how jobs are defined may be in question as SGS evolves; for example, individuals are willingly taking on more responsibility.
- The Constitution implies specific duties assigned to the First and Second Vice Presidents, and they also share some responsibilities and duties.
- According to the Constitution, the chair of the publications committee and the membership chair have no vote at Executive Board meetings.
- Decision regarding a new Webmaster was tabled until the redesigned website progresses to a more final form.
- Members of the Communication Committee are Paul Taylor, Pam Turner, Chris Havnar, Lynda

Simmons, Linda Crocker, Marie Seelye, LeAnne Seely, and Sue Craven. There is no need to consider amendments to the Constitution at this time.

2018 Executive Board Meeting:

Lynda Simmons

- The 2018 Executive Board meeting will be held April 20-21 in Abilene, KS.
- Google Hangouts worked for those who were not available to attend in person last year; others could be invited to the process, via Google Hangouts.

Research Funds: Lynda

Simmons

- SGS Chief Genealogist Linda Crocker and Wesley Waring one of SGS's Directors-at-Large have agreed to work with Apryl Cox to define ongoing needs for research.
- Is SGS allowing just a few people to hold knowledge, or should more people be involved, thus watering down and perhaps complicating the focus of such research?
- Pam Turner, SGS Librarian, indexes actual SGS research.
- Ancestral File is maintained by Linda, Pam, and Chris Havnar.
- Linda moved that the research group define likely individuals to be researched, Chris seconded the motion, and it was unanimously approved.
- Terry Tietjens, Director-at-large, moved that the Board contact SGS assistant genealogists and thank them for their service to the Society, Linda seconded the motion, and it was unanimously approved.

2019 Seeley Genealogical

Society Reunion, San Diego, CA:

Lynda Simmons

- When will the committee meet in San Diego?
- Lodging, tours? Shall we involve the Chamber of Commerce as was done for the Salt Lake City reunion? Collaboration was important to the success of that reunion.
- Executive Board meeting in Abilene in April 2018 will include a discussion regarding planning the next reunion.
- Kathie and Lynda agreed to work with their Riverside, CA, cousins in pre-planning for the reunion.
- Involve/invite the JASFO group to the 2019 SGS reunion.
- Team for initial ground work in California will be Kathie and Lynda.
- Patricia Palmer, SGS Secretary, will provide names and contact information for the California State Parks System, Old Town Boosters, Seeley Stable, and Cosmopolitan Hotel.
- Possible dates for the 2019 Reunion are September 11-14 and September 18-21, 2019.
- Reunion Committee members: Lynda Simmons (Chair), Kathie Olsen, Linda Crocker, Jesse Crisler, James Seeley, Paul Taylor, and Patricia Palmer.

Committees: Lynda Simmons led a discussion that included a review of standing committees, their membership, and actions (including actions to be taken.)

- Nominating Committee:
 - Not a permanent committee.
 - President shall appoint a

Please See Executive Board Minutes Page 10

Children's Ancestry Corner

By Seeley Genealogical Society
Membership Chair Marie Seelye



Editor's Note: This section of the newsletter is dedicated to youngsters. Share these pages with your children, grandchildren, and great-grandchildren. Use them as a way to begin a conversation with them, tell them stories about their family history, and perhaps engender in them a love for genealogy.

Living in the New World Was Hard Work!

Remember in the past that we talked about raising chickens and collecting their eggs; then we talked about sheep and the work it took to shear them, clean the wool, spin it into yarn, and then knit the yarn into clothing. How do you think you would cook your meals and keep warm? Our ancestors used wood. Where did they get the wood? They had to cut down trees. Many of our ancestors first lived in New England, where there are a lot of trees. They cut them

Younger children would help stack the wood in a location close to where it was used (just outside the back door, for example). They dragged saplings, brush, and small branches to a burning pile for disposal. The ash was then collected in barrels, taken to town and sold, or used to make soap.



Here you see my two-year-old son sitting on the stone wall in our back yard in Massachusetts. The wall in this case became a fence. All children had to help maintain the wall and build it in the beginning. If children were not able to build the wall, they were expected to help carry smaller rocks to the wall location.

down to use for firewood to cook and keep warm; but they also needed to clear land in order to grow crops to feed their animals and their family. New England was also very rocky, so they had to clear the rocks before they could cut the wood and plow the fields. They frequently used the rocks to build stone walls.



Older boys helped bring down trees for fields and kitchen gardens and split the wood into stove-sized pieces. Here you see Mr. Seelye chopping down a tree and then splitting the wood into smaller pieces.



Today we have modern tools, such as chainsaws and wood splitters that we can use to help cut down trees and split wood more easily for home fireplaces or wood stoves. Note the protection Mr. Seelye is wearing: hard hat with ear and eye protection, chaps, gloves, and heavy boots.



Our ancestors wanted to clear tree stumps out of their fields to make it easier to plow them. They could pull stumps out with oxen or leave them to rot. Since they usually had hardwood trees, small tree shoots grew up around stumps. The children then had to “grub” these small tree shoots every week in gardens and fields. They used grub hoes and hacked at the shoots. If they failed to grub the shoots properly, more young trees had to be cut the next year. Where we live, the pines do not grow back from shoots but from seeds. It can be difficult to get rid of stumps, so we cut stumps down as close to the ground as we can and then crosscut them. This leaves ridges for water to enter and help rot stumps more quickly. These two stumps were crosscut a year apart. You can see how the older stump is more decayed.

Would you like to do all this hard work?



Although modern tools make many of the chores from olden days easier, they can also make them very dangerous. Motorized saws and powered hydraulic splitters require great care, but in the end, their job is to do the same thing we did by hand centuries ago.



When we are all done, we stack our wood in piles, just as our ancestors did. We have twelve cords of wood to use in our wood stove to keep us warm.

Seeley Genealogical Society Annual Treasurer's Report For the Period Oct. 1, 2016 to Sept. 30, 2017

BEGINNING BALANCE on Oct. 1, 2016	\$91,525.43	
	Investments	Checkbook
	\$77,249.26	\$14,276.17

RECEIPTS	Investments	Checkbook
Patriot Savings Interest	\$349.76	\$0.00
Mountain Federal Interest	\$994.30	\$0.00
Dues	\$0.00	\$810.00
Life Membership	\$0.00	\$500.00
Books	\$0.00	\$215.00
CD's	\$0.00	\$15.00
2015 Souvenir Books	\$0.00	\$95.00
Hard Copies of Newsletters	\$0.00	\$593.00
Donations	\$0.00	\$704.00
Reunion Registrations	\$0.00	\$7,543.00
Reunion Sales (shirts, bags, mints)	\$0.00	\$220.00
Pre-order Reunion Souvenir Books	\$0.00	\$665.00
TOTAL RECEIPTS	\$1,344.06	\$11,360.00

DISBURSEMENTS	Investments	Checkbook
Postage	\$0.00	\$306.59
Supplies	\$0.00	\$19.69
Newsletter Printing	\$0.00	\$420.86
Newsletter Postage	\$0.00	\$97.62
2015 Souvenir Books Printed	\$0.00	\$1,081.86
Deliver Souvenir Books	\$0.00	\$6.82
Utah State Registration Fee for CD's	\$0.00	\$30.00
Maintain SRC house	\$0.00	\$1,000.00
Reimburse DNA testing	\$0.00	\$100.00
Reunion Expenses	\$0.00	\$7,520.38
Seeley Banner	\$0.00	\$185.00
Award Plaque	\$0.00	\$42.74
Reimburse due to illness	\$0.00	\$125.00
NGS Dues	\$0.00	\$50.00
Maintain Website -Chris Havnar	\$0.00	\$351.59
Website Design and Development	\$0.00	\$2,500.00
Genealogical Research - Apryl Cox	\$0.00	\$592.00
TOTAL DISBURSEMENTS	\$0.00	\$14,430.15

	Investments	Checkbook
Beginning Balances:	\$77,249.26	\$14,276.17
Add Receipts	\$1,344.06	\$11,360.00
Less Disbursements	\$0.00	\$14,430.15
Ending Balances on Sept. 30, 2017	\$78,593.32	\$11,206.02

ENDING BALANCE on 30 September 2016	\$89,799.34	
--	--------------------	--

NOTE: Investments with Patriot Federal Banks matured during the fiscal year yielding \$349.76 interest this fiscal year, worth a final total of \$77,599.02.

Those funds were invested in Basic Savings and CD's at Mountain America Credit Union on March 8, 2017. The investments yielded an additional \$944.30 in interest during the last part of the fiscal year.

CONTINUED From Page 7: Executive Board Meeting Minutes

nominating committee one year in advance of the reunion, as per the SGS Constitution; decision as to the committee members will be made at the SGS Executive Board Meeting in Abilene, KS, 2018.

- Auditing Committee
 - Not a permanent committee but appointed every two years to audit the financial records and activities of SGS.
 - The Auditing Committee appointed in West Virginia of Pam Turner and Chris Havnar recommended a subsequent committee of two of the following members, Jesse

Please See Executive Board Minutes Page 11

CONTINUED From Page 6: Membership Meeting Minutes

re-elected.

- The Executive Board recommended San Diego, California, as the site for the 2019 SGS Reunion; the recommendation was unanimously approved.
- Committee members for the 2019 Reunion are James Seeley, Lynda Simmons, Linda Crocker, Jesse Crisler, Paul Taylor, Kathie Olsen, and Patricia Palmer
- Discussion concerning the next reunion included coordinating the date with school schedules, finding a date that coincides with lower travel rates, the importance of families attending, etc.
- The 2017 SGS Reunion Souvenir Book will honor Jerry Havnar for his dedication to and hard work on behalf of SGS.

Adjournment: 1:20 p.m.

CONTINUED From Page 10: Executive Board Meeting Draft Minutes

Crisler, LouAnn Crisler, and Kathie Olsen be commissioned to audit the financial books and activities of the SGS.

- Background: Pam Turner and Chris Havnar interviewed the SGS Treasurer at the reunion in West Virginia. Margaret had not been instructed to bring the books and backup information with her. None of the information reported by the Treasurer provided immediate concern. It was felt that since there are several months left in the SGS fiscal year, the audit committee appointed in West Virginia recommended that an audit committee in Salt Lake City audit the books of the SGS at the end of the SGS fiscal year.
- Awards and Recognition Committee
 - Members: Jesse Crisler (Chair), Marshall Seelye, Thera Seeley Clark.
- Reunion Committee
 - This committee is appointed to research, organize, arrange, and execute the Society's next reunion.
 - Lynda Simmons (Chair), Kathie Olsen, Linda Crocker, Jesse Crisler, James Seeley, Paul Taylor, and Patricia Palmer.
- SGS Genealogy Committee
 - This committee conducts genealogical research on behalf of the society.
 - Members: Linda Crocker (Chair), Chris Havnar.
- DNA Research Committee

- This committee manages the SGS DNA Lineage project and endeavors to research and share information about the use of DNA in genealogy with the SGS membership; Walt Seelye serves as the DNA "gate keeper," while Stephanie Moore shares DNA information with membership.
- Members: Walt Seelye (Chair), Marie Seelye, Stephanie Mills Moore.
- Publications/Communication Committee
 - Oversees the publishing of the SGS Newsletter, Reunion Souvenir book and other publications.
 - Members: Paul Taylor (Chair), Jesse Crisler, Sue Craven, Chris Havnar, Pam Turner, Kathie Olsen, and LeAnne Seely.
 - ◆ Sue Craven focuses on SGS newsletter mailings.
 - ◆ LeAnne Seely focuses on the Souvenir Books for the reunions.
- SGS Website Redesign

Committee

- Charged with overseeing the website redesign
- Members: Paul Taylor (Chair), Lynda Simmons, Chris Havnar, Walt Seelye, Marie Seelye, Pam Turner, and Linda Crocker.

Y-DNA Testing: Wesley

Waring

- Wesley moved to authorize expenditure of funds for basic (37-marker) Y-DNA testing of an individual, who, based on the determination of the Chief Genealogist, Linda Crocker, meets the criterion for said testing, Ruthetta Hansen, SGS director-at-large, seconded the motion, and it was unanimously approved.

Seelye Research Center: Pam

Turner, SGS Librarian

- Apryl Cox's recent research will be put in CD-Rom format.
- Pam will format the newest Newsletters to CD-Rom.
- CDs will continue to be available at the present cost.

Adjournment: 6:30 p.m.

CONTINUED From Page 2: President's Report

newsletter. The officers work hard for SGS!

We want to especially thank Sally and George Seeley! They have served in many positions for SGS, but most recently with Sally as Treasurer and George as Parliamentarian. They are such good people and we miss them at our meetings! We want to thank them for their many years of outstanding service to SGS.

Margaret Petersen took over being Treasurer for Sally, but now

we need someone to take over for George and be our Parliamentarian. The Parliamentarian needs to be present at our Board and Membership meetings and have a knowledge of Robert's Rules of Order. If you can be at our meetings, you can learn the rules. If this is a position you would be interested in filling, please let me know.

I am so glad that each of you are SGS members and friends! Please take care!

Standing Committees of the Seeley Genealogical Society

SGS decided at the 2017 Reunion to publish lists of each of the Society's regular and standing committees at regular intervals. As SGS President, Lynda Simmons is a member of all committees. Want to learn more or volunteer to help? Get in touch with the appropriate committee chair (contact information on page 15).

Nominating Committee: Not a permanent committee. The President shall appoint a nominating committee one year in advance of the reunion, as per the SGS Constitution. The President will appoint this committee at the Board Meeting in April 2018

Auditing Committee: Not a permanent committee. Appointed by the President every two years to audit financial records and activities of SGS.

Awards and Recognition

Committee: Seeks opportunities to recognize the work and achievements of the Society and its members.

Members: Jesse Crisler (Chair), Marshall Seelye, Thera Seeley Clark.

SGS Research Committee:

Conducts Conducts genealogical research on behalf of the Society.

Members: Wesley Waring (chair), Linda Crocker and Chris Havnar. nealogical research on behalf of the Society.

DNA Research Committee:

Manages the SGS DNA Lineage project and works with the above committee to research and share information about the use of DNA in genealogy.

Members: Walt Seelye, Marie Seelye, Stephanie Mills Moore

Publications/Communication

Committee: Oversees the publishing of the SGS Newsletter, Reunion Souvenir Book, and other publications.

Members: Paul Taylor (chair), Jesse Crisler, Linda Crocker, Sue Craven, Chris Havnar, Pam Turner, Kathie Olsen, and LeAnne Seelye.

SGS Website Redesign

Committee: Oversees the website redesign

Members: Paul Taylor (chair), Chris Havnar, Walt & Marie Seelye, Pam Turner, and Linda Crocker.

2019 Reunion Committee: Lynda Simmons, James Seeley, Linda Crocker, Jesse Crisler, Paul Taylor, Kathie Olsen, Patricia Palmer, Margaret Petersen, Camille Bell, Kelly Findley, Kristi Anderson.

SGS Queries (as of November 7, 2017)

Coordinated and Compiled by SGS Query Editor Linda Crocker

The SGS query column leverages the amassed knowledge of SGS, the research skills of the Society's query team, and the knowledge of SGS members to help answer challenging research questions.

Submit queries to SGS Query Editor Linda Crocker at llbc100@msn.com, or mail to Linda at home (contact information on page 15). Queries are assigned a query number by the Query Editor, researched, and then sent to the query team for input. Linda summarizes the query and responses for inclusion in the Newsletter.

Be sure to follow a few guidelines when submitting a query:

Be specific and detailed: Give all the information you have about the person or family in question,

especially dates and locations.

What resources have you already consulted? SGS publications or website? Census? Cemetery records? County histories? Family Bible? Others? (Specify.)

What exactly do you want to know? Parents' names and details? Sibling information? Information on a family marrying into a Seeley family? Our sources?

After your query is printed, please keep us informed of any information you receive or further progress you make on your own. Other members may be interested in or related to your line.

We will publish an update to your query with any new information we receive. This may lead to even more new information. One more name,

date, or place may be the key to linking your line to others. Your query will also be posted on the website. Make sure we have your current and complete contact information—sometimes we receive new information months or even years after a query appears.

If you have information to share on queries from current or past issues of the Newsletter, send it to the query submitter and also to Linda Crocker, **so the query can be updated in the next Newsletter. Please include the query number**, preferably in the subject line of your email. Remember to cite your sources.

The query number is the two digit year, two digit month of the Newsletter issue and query sequence number.

CONTINUED From Page 12: SGS Queries**NEW QUERIES:**

1711-1 Submitted by Jan Moon
(stay@lobstermotel.com.au)

Jan, who lives in Australia, wants to reconnect with cousins in New Zealand. Her cousins are Robyn Andra Seelye Neeley and David Hall Seelye. They are both children of Edgar Cassilis Seelye and his wife, Robin Hall Hitchon. Edgar is a descendant of SGS# 2303 David Seelye, b. 1816, New Brunswick, d. 1864, Australia. Andra is married to Lance David Neeley.

SGS Response: I found Andra Neeley on Facebook, living in NZ, and have suggested that Jan try to 'friend' her. Jan said she tried that and that Andra does not seem to be active on Facebook anymore. Does anyone have any ideas to help Andra?

1711-2 Submitted by Terry Tietjens
(seelyemansion@yahoo.com)

Terry has been trying to determine the lineage of Patrick Kevin Seelye of Lawrence, KS, a visitor to the Seelye Mansion. So far he has found:

- Patrick Kevin Seelye's father is Patrick Henry Seelye, b. 8 Aug 1946, St. Mary's, PA, d. Alpena, MI, 30 Dec 2015.
- The grandfather is Charles Patrick Seelye, b. 7 Sep 1918, St. Mary's, PA, d. 27 Aug 1988, Alpena, MI, md. Helen Hawley.
- The great-grandfather is Robert Andrew Seelye, b. 24 Apr 1872, Rathburn, Elk, PA, d. 17 Mar 1956, St. Mary's, PA, md. Othelia Spellenberg in 1900.
- The great-great-grandfather is Simeon R. Seelye, b. 6 Aug 1825, d. 22 Mar 1896, PA, md. Rebecca R. Haines, b. 1831, d. 1886.

SGS Response:From Findagrave

- Simeon R. Seelye, b. 6 Aug 1826, d. 22 Mar 1896, bd. Glover Cemetery, Beechwood, Cameron, PA.
- There were Haines and Glover families in Cortland Co., NY, who lived in proximity to a William Seelye, aged 30-39, in 1830.

There were several marriages between members of these families, and some of them settled in Potter Co. and then Cameron Co., living in close proximity to Simeon, so it seems somewhat likely that William is related to Simeon. But then, who is William and how are they related?

1830 census Marathon, Cortland, NY

- William Seely: 1 male under 5, 1 male 5-10, 1 male 20-30, 1 male 30-40; 1 female under 5, 1 female 5-10, 2 females 20-30

1830 census Virgil, Cortland, NY

- Holly Seely, 2 males 5-10, 1 male 20-30, 1 male 40-50; 2 females 10-15, 2 females 15-20 and 1 female 40-50.

This family corresponds to that of Holly Seely, SGS# 1883. However, there is not a son or brother of Holly who matches William. The SGS database lists a William, b. 1799, md. Jane Glover, father of Ira, Jacob, John, Julia, and Sally Anne. This is from an old family group submission, which gives no parents for William or sources. If you have more on this family, please let me know.

1711-3 Submitted by Chris Havnar
(chris.havnar@gmail.com)

Chris recently found an obituary for Mark Seeley of

Hobart, Lake, IN, d. 27 Oct 2017, age 74. The obituary lists Mark's parents as Clayton and Margaret Seeley. Chris had previously researched this family, based on Margaret's obituary.

1930 census Chicago, Cook, IL

- Seeley, Clayton B., lodger (in hotel), age 25, b. IN, MN, IN, plasterer

1920; census Hammond, Lake, IN

- Seeley, Grant D., age 52, b. OH, US, IRE, RR freight conductor
- Seeley, Lottie, age 38, b. IL, MD, KY
- Seeley, Clayton, age 16, b. IN, OH, IL
- Linz, Maud, age 28, lodger, b. IN, IL, US

1910 census Hammond, Lake, IN

- Seely, John, age 37, b. OH, OH, OH, steam RR conductor, md. 9 yrs. to
- Seely, Lottie, age 26, b. IL, MD, KY, borne, 1 ch., living
- Seely, Clayton, age 6, b. IN, OH, OH
- Erickson, F. L., age 33, b. NOR, NOR, NOR, foreman

1900 census North, Lake, IN

- Seely, John, boarder, b. Sep 1865, OH OH OH Switchman

1904 Hammond Indiana City Directory

- Seely, Grant D. – John (Lottie E.), switchman, h 4713 Olcott Av

IN Marriage Record

- Grant D. Seely, age 34, md. Lottie E. Barron, 23 Jan 1901, Lake Co, IN

IL Death Index

- Grant Delaney Seeley, b. 9 Sep 1866, MN, d. 4 Oct 1924, Thornton, Cook, IL, bd. Oak Hill, switchman, spouse Lottie Seeley, father Grant D, Seeley
What is Grant Seeley's ancestral lineage?

SGS Response: I wasn't able to find any evidence of an older Grant D. Seeley and imagine that the death record informant, probably the son, Clayton, put his own father's name on the form. I have seen this happen several times before. However, I did find:

Chicago, IL Voter Reg'n 1892

- Seely, G. D., b. OH, lived in precinct 4 mos., in county and state 1 yr.

1870 census Lebanon, Meigs, OH

- Seely, Solomon B., age 49, b. OH, jour carpenter
- Seely, Ruth A., age 42, b. MD
- Seely, William H., age 20, farmer, Mary F., age 15, Martha E., age 12, Charlie R., age 8, Lydia E., age 6, Grant, age 2, all b. OH

We have Solomon B. Seely in the SGS database as a son of SGS# Abijah C. Seely. Unfortunately, Grant is not listed with Solomon and Ruth in the 1880 census, and I have not been able to locate him elsewhere. I also cannot find any other Grant Seeley. I would like to find some link between Grant, the son of Solomon, and Grant who married Lottie Barron before making that conclusion. Let me know if you can help.

1711-4 Submitted by Chris Havnar
(chris.havnar@gmail.com)

This is another query coming from an obituary. Madelyn Rose Seeley d. 18 July 2017, Seattle, King, WA. The obituary names John "Jack" Seeley as her husband of 58 years. Chris found their marriage record:

Please See SGS Queries, Page 14

CONTINUED From Page 13: SGS Queries

- John W. Seeley, b. Seattle, age 29 at last birthday, md. Madelyn R. Lewis, 11 Jul 1959, Seattle. Madelyn was age 27, b. UT.

Who is this John Seeley?

SGS Response: I found an obituary for Thelma Beneshoof Seeley on the SGS website, which says that she married Raymond W. Seeley, 20 Sep 1929, and their children were John (Jack) Seeley, wife Madelyn; Jill, husband John Ashley; Steve; and Rita.

1940 census Wynona, King, WA

- Seeley, William R. (Raym____ is crossed out), age 35, b. WA, sheet metal work at aircraft factory
- Seeley, Margaret D., age 33, b. WA
- Seeley, Jack, age 9, Jill, age 3, both b. WA
- Seeley, Charles W., father, age 55, divorced, b. ND, sheet metal work at sheet metal shop
- Next door is Allen Benhoof, age 31, with his family. (This obituary also mentions Thelma's brother Allen)

1930 census Seattle, King, WA

- Seeley, William R., age 25, b. WA, KS, SD, sheet metal work at airplane factory, md. less than 1 yr. to
- Seeley, Thelma B., age 24, b. WA, IA, IA

1920 census Seattle, King, WA

- Seeley, Charles W., age 34, b. WI, WI, WI, metal worker
- Seeley, Blanche B., age 34, b. ND, NY, CAN
- Seeley, Raymond, age 14, b. WA, WI, ND

1920 census Midland, Pierce, WA

- Peterson, Martin F., age 32, b. MN, MN, NOR, shredder at lumber mill
- Peterson, Ethel B., age 27, b. MT, WI, WI
- Peterson, Bernice A., age 4 yrs., 10 mos., Eugene A., age 3 yrs, 1 mo., Vivian M., age 1 yr., 9 mos., Remona M., age 6 mos., all b. WA, MN, MT
- Seeley, Charles H, father-in-law age 65, widowed b. WI, WI, WI, stickerman at planing mill

1910 census Spokane, Spokane, WA

- Seeley, Charles, age 55, b. WI, WI, WI carpenter, md. 32 yrs. to
- Seeley, Arletta, age 54, b. WI, WI, WI, borne 5 ch. 3 living
- Seeley, Lenford, age 30, son, carpenter laborer, Bernice, dau., age 17, both b. WI, WI, WI
- Seeley, Charles, age 24, son, b. WI, WI, WI, tinsmith, md. 6 yrs. to
- Seeley, Blanch, age 24, b. MT, MT, MT, borne 1 ch, living
- Seeley, Raymond, age 5, grandson, b. WA, WI, MT

1900 census Misesebshell, Meagher, MT

- Seely, Lanford, b. June 1879, WI, WI, WI, carpenter for RR, listed as lodger in home with several other men

1880 census Lindina, Juneau, WI

- Seeley, Charles, age 24, b. WI, CT, CT, farmer
- Seeley, Arletta, age 25, b. WI, NY, OH
- Seeley, Lenford E., b. June 1879, WI, WI, WI

Also in Lindina:

- Seeley, William, age 31, b. WI, CT, CT, farmer
- Seeley, Mattie A., age 29, b. WI, NY, NY
- Seeley, Lurah(?) age 5, Harry B., age 4, infant dau., b. May 1880, all b. WI, WI, WI
- Seeley, Arletta, age 13, niece, b. WI, WI, WI

1870 census Albion, Jackson, WI

- Ward, Lara, male, age 29, b. New Br., foreman

- Ward, Sarah, age 19, b. WI
- Ward, Elmer P. age 2 mos., b. WI
- Seeley, Charles age 14, b. WI

next home

- Hiles, Samuel, age 42, b. MI, lumberman
- Hiles, Harriet, age 34, b. CAN
- Hiles, Franklin, age 15, Ella, age 12, both b. WI
- Thompson, Luy, female, age 17, b. OH, house servant
- Paickley, Henry, age 22, b. IL

1870 census Willow, Richland, WI

- Seeley, Theodore, age 24, b. WI, farmer
- Seeley, Caroline, age 18, b. WI
- Seeley, Herbert, age 1 b. WI

June 1863 Civil War Draft Reg'n

- Lewis P. Seeley, age 25, md., farmer, b. CT

Civ. War Deaths

- Lewis P. Seeley, Co. E, Reg. 9, d. 18 May 1865, Reg'tl Hosp., Rolla, Phelps, MO

1860 census Westford, Richland, WI

- Seely, Charles, age 44, b. CT, farmer
- Seely, Caroline, age 47, b. CT
- Seely, Lewis, age 22, laborer, Ann, age 20, both b. CT
- Seely, Julia, age 17, Theodore, age 14, William, age 12, Sarah, age 8, Charles, age 4, all b. WI

1850 census Baraboo, Sauk, WI

- Seely, Charles, age 32, b. CT, silversmith
- Seely, Caroline, age 36, b. CT
- Seely, Harriet, age 14, Lewis, age 12, Ann, age 10, Joseph, age 8, all b. CT
- Seely, Julia Ann, age 6, Theodore, age 4, William, age 1, all b. WI

- Wood, Ann, age 60, b. CT

Newtown, CT VR

- Seeley, Charles, of Newtown, md. Caroline Johnson of Litchfield, 20 Mar 1836, by Rev S C Stratton

WA Death Cert.

- Charles Seeley, age 70, d. 1 Oct 1924, Lake View, Pierce, WA. His parents were Charles Seeley and Carolina Johnson; his wife was Arletta A. Seeley
- Charles William Seeley, age 59, d. 11 Feb 1945, Seattle, King, WA. His father was Charles; his wife was Bernice.

SS Application

- Ethel Bernice Peterson, b. 13 Sep 1892, Great Falls, MT, to Charles Seeley and Arletta A. Stewart
- Linford E. Seeley, b. 15 Jun 1879, Mauston, Juneau, WI, to Charles Seeley and Arletta Stewart

Findagrave

- Harriet Seeley Hiles, b. 5 Jul 1836, CT, d. 7 Dec 1873, wife of Samuel Hiles, dau. of Charles Seeley and Caroline Johnson, bd. Dexterville Cemetery, Dexterville, Wood, WI
- Sarah Elizabeth Seeley Ward, b. 11 Sep 1851, Ironton, Sauk, WI; d. 9 May 1936, Port Edwards, Wood, WI, md. Lawrence Ward, bd. Babcock Cemetery, Babcock, Wood, WI

I was not able to find most of the family in the 1900 census. Research Query 2009-B also dealt with this family. A descendant's DNA test showed descent from Nathaniel. Charles Seelye is listed in the 1840 census of Newtown, Fairfield, CT, next to Thos. Seelye (age 40-50). Where can I find evidence to put Charles in a particular Nathaniel line?

SGS Elected Officers & Board of Directors for 2017 - 2019

SGS Constitution, Art IV, Sect. 1: The elected officers of the Society shall be a President, First Vice-President, Second Vice-President, Secretary, Treasurer, Chief Genealogist, and three Directors elected from the general membership.

President

Lynda Simmons
125 Parkview Drive
Park City, UT 84098
(435) 649-9878 cell (801) 910-0300
summitkids@gmail.com

1st Vice President & Pubs Editor

Paul Taylor
4901 Seminary Rd Apt 1602
Alexandria, VA 22311
(757) 759-9551
paul.taylor.va@gmail.com

2nd Vice President

Jesse S. Crisler
2221 West 850 North
Provo, UT 84601
(801) 375-8004
jessecrisler3@gmail.com

Secretary

Patricia Brooks Palmer
150 Luxorwind Drive
Garner, NC 27529
916-730-6228
palmnet@aol.com

Treasurer

Margaret Petersen
2728 S. Highland Drive #4
Salt Lake City, UT 84106
(801) 466-3671
kpetersen7835@msn.com

Chief Genealogist

Linda L Crocker
61 Ronald Reagan Drive, Westwood,
Parkersburg, WV 26101
(304) 210-5591
llbc100@msn.com

Director

Terry Tietjens
P.O. Box 337, 1105 N. Buckeye
Abilene, KS 67410
(785) 263-1084
seelvemansion@yahoo.com

Director

Wesley Waring
16179 89th Ave. N.
Maple Grove, MN 55311
(763) 494-3277
wesleyawaring@cs.com

Director & Historian

Ruthetta Seelye Hansen
1129 S County Line
McCracken, KS 67556
(785) 394-2316
rhansen@gbta.net

SGS Appointed Officers and Volunteers for 2017 - 2019

SGS Constitution, Art IV, Sect. 1: "The President shall appoint an Ancestor Files Chair, a Membership Chair, a Publications Editor, Assistant Genealogists as required, and a Director for the National Research Center." **SGS By-Laws, Art. III, Section 9:** "The immediate past President shall be an ex-officio member of the board of directors and committees in a non-voting advisory capacity." **SGS By-Laws, Art. III, SECTION 10:** "The President, with the approval of the Executive Board, may establish other positions and collateral duties not named elsewhere."

Past President

Katherine M. Olsen
2708 South Highland Drive #5
Salt Lake City, UT 84106
(801) 355-0301
katherinemolsen@gmail.com

Webmaster, SGS Ancestor File, Assistant Genealogist – Robert

Chris Havnar
625 Canyon Dr.
Pacifica, CA 94044
(650) 359-5617
chris.havnar@gmail.com

Assistant Genealogist – Obadiah

Dian Little
3120 202nd Street, SW
Lynwood, WA 98036
(206) 890-9116,
dianlittle@hotmail.com

Asst. Genealogist – Other Lines

Pauline Cilley Gamer
150 Westport Road
Wilton, CT 06897
nurse5836@yahoo.com

Membership Chair

Marie Seelye
13802 Pine Glen Dr. E.
Black Forest, CO 80908
(719) 495-4316
seelvew@gmail.com

Query Editor/SGS Ancestor File

Linda L Crocker
61 Ronald Reagan Drive, Westwood,
Parkersburg, WV 26101
(304) 210-5591, llbc100@msn.com

Parliamentarian

George Seeley
1442 Thousand Acres Rd.
Delanson, NY, 12053-2223
(518) 895-8009, sseelev3@nycap.rr.com

Librarian, Seelye Research Center

Pamela D. Turner
1935 Okeechobee Drive
Colorado Springs, CO 80915-1743
Cello_t@comcast.net (underscore between o and t)

Seelye Research Center

Terry Tietjens
P.O. Box 337, 1105 N. Buckeye
Abilene, KS 67410
(785) 263-1084
seelvemansion@yahoo.com

SGS CD-ROM Project Director

Pamela D. Turner
1935 Okeechobee Drive
Colorado Springs, CO 80915-1743
Cello_t@comcast.net (underscore between o and t)

DNA Lineage Project Manager

Walt Seelye
13802 Pine Glen Dr E
Black Forest, CO 80908-3508
(719) 495-4316, seelvew@gmail.com

Seeley Genealogical Society Membership Form

NAME (First, Middle Initial, Last)		TELEPHONE NO.
ADDRESS (Number, Street)		E-MAIL ADDRESS
ADDRESS (City, State, Zip)		<input type="checkbox"/> New Membership <input type="checkbox"/> Renewal
DESCENDANT OF: <input type="checkbox"/> Robert <input type="checkbox"/> Obadiah <input type="checkbox"/> Other (Attached) <input type="checkbox"/> Unknown		NEWSLETTER DELIVERY: <input type="checkbox"/> E-Mail <input type="checkbox"/> Regular Mail (\$12 a year)
I/we have submitted our Seeley line as far as known to Linda Crocker or Chris Havnar (contact info above) for inclusion in the SGS Ancestor File		<input type="checkbox"/> YES <input type="checkbox"/> PLANNING TO <input type="checkbox"/> NO
MEMBERSHIP OPTIONS: (In U.S. Dollars)		<input type="checkbox"/> ONE YEAR \$10 <input type="checkbox"/> TWO YEARS \$18 <input type="checkbox"/> THREE YEARS \$25 <input type="checkbox"/> FIVE YEARS \$36 <input type="checkbox"/> LIFETIME \$125
MAIL FORM AND MEMBERSHIP FEE TO: Marie Seelye 13802 Pine Glen Dr. E. Black Forest, CO 80908		DONATION: I/we would like to make a tax deductible donation to SGS in the amount of \$ _____ (U.S.)

SGS is a Title 501(c)(3) Organization. All Donations are Tax Deductible.



Seeley Genealogical Society

% MEMBERSHIP CHAIR

MARIE SEELYE

13802 PINE GLEN Dr. E.

BLACK FOREST, CO 80908

ADDRESS SERVICE REQUESTED

Please notify SGS via email at seelyew@gmail.com if the person on the above label is no longer living at this address.

SGS Publications for Order

SGS has several publications and research tools for sale.

1. Print/mailed version of the *SGS Newsletter* (U.S. \$12 per year)
2. *The Descendants of Robert Seeley (1602-1667) and Obadiah Seeley (1614-1657), Generations One Through Five*, 1997 Edition (U.S. \$17)
3. *The Sixth Generation Families*, 1995 Edition (U.S. \$35)
4. *The Seventh Generation Families: Descendants of Robert Seeley (1601-1667) and Obadiah Seeley (1614-1657)*, 2000 Edition (U.S. \$35)
5. Set of All Three SGS Publications (above) (U.S. \$85)
6. The SGS CD-ROM -- Revised August 2013 (U.S. \$15) that includes:
 - The Three SGS Publications by Madeline Mills and Katherine Olsen
 - SGS Newsletters from Issue 1 in 1965 through August 2013
 - 1980s Research Rpt. on Obadiah Seeley (New Eng. records), Fred C. Hart, Jr., CG
 - Research Report on Robert Seeley by Alan Phipps, MA, AG
 - 2006 Research Rpt on Obadiah Seeley (old English records), Clifford L. Stott, CG
7. The SRC Document Index (with Change Seven entered) lists documents shelved at the Seelye Research Center (U.S. \$10)
 - Item 1 should be ordered from Marie Seelye
 - Items 2, 3, 4, 5 should be ordered from Terry Tietjens
 - Item 6 from Pamela Turner
 - Item 7 from Pamela Turner

Contact information is on page 15.

All checks should be made payable to SGS.

When the photo below was posted to the Facebook page of one SGS Reunion attendee, there were an astronomical number of comments, the overwhelming majority of which said how **AWESOME** Veronica Seeley Newell and Nick Taylor looked in their commemorative

SGS 50th Anniversary T-Shirts!



Did you get yours?

If not, you're in luck!!!

While supplies last, you too can look as cool as Veronica and Nick, but order yours today, they're going FAST! Shirts are available in sizes S, M, L and XL (\$12.00) and 2X (\$14.00).

To get yours, contact Linda Crocker (see contact info on page 15).