



Seeley Genealogical Society Newsletter

Established 1965

Issue No. 163-2015-01

History ★ Family ★ Research

February 2015

Electronic Delivery of SGS Newsletter Begins November, 2015

Story by Kathie Olsen, SGS President

In the November 2014 issue of the newsletter, I recommended that one way to stop the flow of cash from our general operating fund would be to move to an electronic delivery of our newsletter. The cost in both printing and postage continues to rise. At the present time, the cost is approximately \$12.00 per year per person for four issues of the newsletter. This exceeds a year's dues. Remember as well that since a substantial number of SGS members are life members, they are currently not paying dues.

A majority of the Executive Board recently voted to implement this change. Starting with the November 2015 issue of the SGS Newsletter, SGS will move to an electronic version of the newsletter. All members are offered an opportunity to receive the newsletter by electronic means. We will be happy to send the newsletter to any email address you provide: your own, a friend's, a relative's, a business address, etc. Email costs the Society nothing. As Paul Taylor, SGS First Vice President, recently said, "The value of the newsletter is in the intellectual capital that goes into its content and design." You can print it or save it electronically. It will be in color, and you will receive it immediately upon the completion of an issue.

Remember that if you want to receive the newsletter by email, you will need to furnish a current email address to Lynda Simmons, SGS Membership Chair, before October 25, 2015. It will then be essential to keep the Society updated with your current email address.

SGS will provide a printed copy of the newsletter for an



additional charge. This is similar to purchasing a book or other materials from SGS. If you wish to receive a printed copy of the newsletter, the charge will be \$12.00 per year, which is what it is presently costing SGS to produce four issues of the newsletter per person. This fee will be analyzed yearly because both printing and postage will likely increase in the coming years. A \$12.00 check (USD) should be sent to the SGS Treasurer before November 15, 2015 if you wish to receive a printed copy.

In addition to this change, the Board also voted to discontinue sending complimentary copies of the newsletter to non-member-sponsored genealogical libraries and societies.

Only Two Issues of the SGS Newsletter Left Before We Go To E-Mail Delivery*

Does SGS Have Your E-Mail Address?

In order for you to continue receiving this important benefit of SGS Membership, we must have your email address. Please send it to the SGS Membership Chair today at summitkids@gmail.com

*You can continue to receive a hard copy of the SGS Newsletter delivered by U.S. Mail by sending a check or money order for \$12.00 (to cover printing and mailing costs) to the SGS Treasurer BEFORE Oct. 25, 2015.

Inside This Issue

President's Report.....	2
Updated 2015 Reunion Schedule	3
2017 Reunion Location Nomination Form	5
2015 Reunion Registration Form	6
Found! Class Ring Returned after 37 Years	8
Seelye Research Center Update	9
SGS Queries	12
SGS Officers Contact Information.....	15
SGS Publications to Order	16



Member: National Genealogical Society

The Seeley Genealogical Society Newsletter

is published quarterly by the
Seeley Genealogical Society

Editors

Paul Taylor
Jesse Crisler

Address newsletter correspondence to:

SGS Newsletter
4901 Seminary Rd. Apt. 1602
Alexandria, VA 22311

Phone: 757-759-9551

email: paul.taylor.va@gmail.com

Announcements

The SGS Newsletter is published every February, May, August, and November. Announcements are published for free and are due to the editor by the 15th of the month preceding publication.

SGS Mission Statement

The Society shall engage in research, study, verification, discussion, collation, publication, dissemination, and preservation of Seeley information for the Society, for the education and benefit of its members and for posterity.

Membership

Membership is open to anyone interested in genealogy, history or biography; amateur or professional. Although the name Seeley refers to one family surname, SGS counts among its family those with surnames spelled a variety of ways such as: Seeley, Seely, Seelye, Sealy, Sealey, Seley, Selye, Seale, Seelee, Seela, Cieley, Cealy, Cilley, etc.

Membership Dues

Effective Oct. 1, 2011 SGS Membership dues are \$10 per year, \$18 two years, \$25 three years, or \$36 five years. Lifetime memberships are \$125. (Dues are in U.S. dollars and the membership year runs from Oct. 1 to Sept. 30)

Pay all dues to:

SGS Membership Chair
Lynda Simmons
125 Parkview Drive
Park City, UT 84098
(435) 649-9878
summitkids@gmail.com

Seelye Research Center

is co-located with the Seelye Mansion in Abilene, Kan. For more information, contact:

Seelye Research Center, Director
Terry Tietjens
P.O. Box 337, 1105 N. Buckeye
Abilene, KS 67410-0337
Phone: (785) 263-1084
email: seelyemansion@yahoo.com

SGS International Reunions

are held every two years. The next one is scheduled for July 27-29, 2015, in Abilene, Kan. Please advise the editor if your branch or family has plans for a sectional or local reunion in the interim. Others might like to know about it.

Editorial Position

The editorial opinions expressed in this newsletter are the opinions of the writers and do not necessarily reflect the opinions of the Society or the editors, nor are the Society or its editors responsible for errors of fact or opinion. Proved errors will be corrected.

SGS President's Report

Seeley Genealogical Society President, Katherine M. Olsen

I certainly appreciate the elected and appointed officers of SGS. This is an organization of volunteers. It takes many committed people to move the organization forward. If you are willing to help in any way, please get in touch with the members of the nominating committee. Jesse Crisler is the Chairperson with Camille Seeley Bell and Marie Seelye as members. Call Jesse today. The committee is still working on building a slate of officers for 2015-2017.

Thank-you for your many and varied responses to the November President's Report. Thanks also to those who have made donations to SGS and the Seelye Mansion Foundation. All donations to either of these organizations are tax deductible.

I thank the members of the SGS History Committee: Ruthetta Seelye Hansen, Jim Seeley, Wesley Waring, and myself. The committee prepared a short history of SGS for the Grand Rapids Reunion Souvenir Book and all future reunion books. Because this task is now completed, this committee is disbanded. I also want to thank the members of the Constitution and Bylaws Committee with George Seeley as Chairperson. The committee completed the assignment it was given and was disbanded following the Grand Rapids reunion. A new committee will be formed at the Abilene reunion, and if you are willing to serve, please get in touch with me.

Jim Seeley has resigned from SGS committees with the exception of his assignment as immediate past president on the Executive Board in a non-voting advisory capacity. I thank him for his many years of service. In addition to the History Committee, he also served as chair of the Awards and Recognition Committee and a member of the Publications Committee and the Research Committee. I hope you will consider volunteering to serve in his place.

I will serve as the chair of the Awards and Recognition Committee with Marshall Seelye and Thera Seeley Clark as members. Recently, we nominated our newsletter to be considered in the Family Organization Newsletter competition sponsored by National Genealogical Society. I heartily thank Paul Taylor for the fine job he does in compiling the society's newsletter.

Wesley Waring is serving as chair of the Research Goals Committee. The goals for 2014-2015 include organizing the information SGS has compiled over the years concerning Obadiah Seeley. Dian Little sent a copy of all of the information she has researched. A professional genealogist will be hired to analyze this work, write a report, and suggest possible additional areas of research. Linda Crocker will research Seeleys who settled Kansas. Hopefully, some additional DNA testing will be completed, especially by Seeley family members in Kansas.

Linda Crocker and Chris Havnar continue to amaze me with their research abilities. They are tireless in their efforts to locate members of the Seeley family. Our Facebook page was instrumental in the return of a Rice University alumni ring to a Seeley man who had lost it years ago.

I am really looking forward to our 2015 reunion to be held in Abilene, Kan. It will run from Monday, July 27, to Wednesday, July 29, 2015. I hope you are making plans to join us. Be sure to copy and share the reunion flyer in this newsletter with all of your relatives. A registration form for the reunion is in this newsletter. I believe that reunions play a vital role in SGS. They give us the opportunity to be together in one place to share friendship and information as well as to learn about our ancestors and their history. Besides that, they are fun. But it takes a lot of work to put one together. As the President of SGS, I have the responsibility of ensuring that all arrangements are made so that the event will be successful. I am assisted in this responsibility by a very competent committee. I hope that all of you can be in Abilene in July!

Site selection for the 2017 reunion will be determined by nominations submitted

Please See President's Report Page 12



Additional Details Released for SGS Reunion in Abilene

Story by Kathie Olsen, SGS President

(Updated January 17, 2015)

Sunday, July 26, 2015

Seelye Research Center

6 p.m.: SGS Elected and Appointed Officers Mtg

Discussion will include reports by elected and appointed officers. Full agenda to be published in advance of meeting, but one of the major topics for discussion will be the selection of the site for the 2017 SGS Reunion. All interested persons are invited to attend.

Monday, July 27, 2015

Seelye Mansion

8 a.m. to Noon: Registration

8 a.m. to 9:30 a.m.: Breakfast

Served on the grounds of the Seelye Mansion – Terry Tietjens's fabulous sweet rolls, fruit, juice, and coffee. No charge. Reservations needed in advance.

9:30 a.m. to 10 a.m.: Tree Planting Ceremony

Commemorating the 50th Anniversary of SGS. There will also be a ribbon cutting ceremony for the Seelye Research Center and Hospitality Area.

10 a.m. to 12:30 p.m.: Tours

1. Seelye Mansion, and Seelye Research Center & Hospitality Area
2. Dickinson County Heritage Center & Carousel, and Eisenhower Presidential Center (Reservation with \$4.00 needed in advance to cover shuttle transportation to and from the Seelye Mansion. Bring along \$4.00 for admission to the heritage center and \$10.00 for admission to the presidential center)
3. (Departs 10:20 a.m.) Historic Trolley Tour of Abilene and the Russell Stover Factory

(Reservation with \$10.00 needed in advance to cover transportation to and from Seelye Mansion)

12:30 to 2 p.m.: Boxed Lunch on lawn of Seelye Mansion

Choice of ham, turkey, or vegetarian sandwich, chips, fruit, cookie, and choice of coffee, lemonade, or water (Reservation with \$9.00 needed in advance)

2 p.m. to 4:30 p.m.: Tours

4. Seelye Mansion, and Seelye Research Center & Hospitality Area
5. Dickinson County Heritage Center & Carousel, and Eisenhower Presidential Center (Reservations with \$4.00 needed in advance to cover shuttle transportation to and from the Seelye Mansion. Bring along \$4.00 for admission to the heritage center and \$10.00 for admission to the presidential center)
6. (Departs 2:20 p.m.) Historic Trolley Tour of Abilene and the Russell Stover Chocolate Factory (Reservation with \$10.00 needed in advance to cover transportation to and from Seelye Mansion)

5 p.m. to 7 p.m.: Dinner at the Hitching Post Restaurant

Choice of barbeque beef, roast pork, or vegetarian (Reservation with \$20.00 needed in advance)

7:30 to 9 p.m.: Ride Abilene and Smoky Valley Railroad

(Reservation with \$12.00 needed in advance)

Tuesday, July 28, 2015

Abilene Civic Center

8 a.m. to 9 a.m.: Registration

9 a.m. to Noon: Opening Session - Announcements

History of Abilene, Dickinson County and Kansas by Michael Hook, Historian

Historic Kansas and Fiction by Debra Seely, Author

Please See Reunion Schedule Page 9

Society Seeks Sponsors for Libraries and Genealogical Societies

Story by Kathie Olsen, SGS President

As discussed in the article on page 1, the SGS Board of Directors has voted to no longer send hard copies of the newsletter to libraries and societies in an attempt to further reduce society expenses.

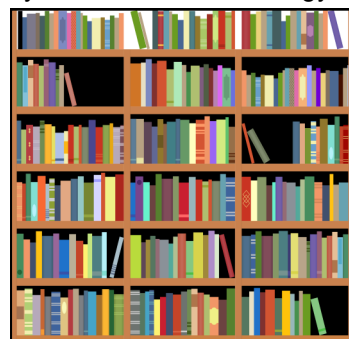
Understandably, most libraries are interested in only receiving hard copies of periodicals for their collections. For \$12 a year, you can ensure the society's work and news lives on in the collections of libraries already receiving hard copies as well as others you may be interested in supporting. If you are interested, please send a check to the SGS Treasurer along with the name and address of the society or library you would like to sponsor.

Here is a list of the libraries and societies which will receive their final SGS Newsletter with the August 2015 issue:

- Genealogical Forum of Oregon
- Connecticut Society of Genealogists*
- Kansas State Historical Society
- New Brunswick Provincial Archives
- Connecticut Ancestry Society
- Mesquite History and Genealogy Society
- Minnesota Genealogical Society
- New England Historic Genealogical Society
- New Haven Colony Historical Society

- New York Genealogical & Biographical Society
- Southern California Genealogical Society*
- Yakima Valley Genealogical Society*
- Wisconsin State Historical Society
- LDS Family History Library*
- Orange County Genealogical Society
- Allen County Public Library*
- Tulsa Genealogy Center
- Heritage Quest Research Library
- State Historical Society of Iowa (Des Moines)
- Library of Michigan
- Mid-Continent Public Library and Midwest Genealogy Center
- New York Public Library Local History and Genealogy Division
- Library of Congress
- Denver Public Library
- Huntington (NY) Historical Society*
- State Historical Society of Iowa (Iowa City)

*Organizations which receive the e-mail copy



SGS is a Title 501(c)(3) Organization. All Donations are Tax Deductible



SAVE THE DATE!
Our Golden Anniversary
SGS 1965-2015
July 27 – 29, 2015



**Historic
 Abilene Kansas**
 Seelye Mansion tours
 Seeley Histories
 Seelye Genealogy
 Eisenhower Center
 Heritage Center/Carousel
 Steam train rides
 Trolley rides
 Much more



FUN FOR THE WHOLE FAMILY

Held in conjunction with the 70th Wild Bill Hickock rodeo
 And Central Kansas Free Fair and Parade – July 30 – August 5



REGISTER EARLY (motel rooms will go fast)
 Check out our Facebook page and the SGS Web site
 for registration information as it becomes available!

Holiday Inn Express Offers Break to SGS Reunion Attendees

Story by Kathie Olsen, SGS President

Although many of the 2015 SGS International Reunion's activities will be held at the Abilene Convention Center, the Holiday Inn Express and Suites in Abilene, Kan., will serve as the Reunion Hotel. It is offering a rate of \$99.00 per night plus tax, including breakfast (about \$20 off the normal rate). If you would like to stay there, call (785) 263-4049 no later than June 25, 2015, and mention that you are with the Seeley Genealogical Society. The number of rooms being held is limited, so call soon. Other lodging options include:

Abilene's Victorian Inn Bed and Breakfast

820 NW Third

www.abilenesvictorianinn.com

(888) 807-7774

Super 8

2207 N. Buckeye

super8abilene@yahoo.com

(785) 263-4545, 1-800-800-8000

America's Best Value Inn

2210 N. Buckeye

www.abvi.com,

(785) 263-2050

Diamond Motel

1407 NW Third

www.diamondmotel.com, diamondmotelkanas@gmail.com

(785) 263-2360

Budget Lodge Inn

116 NW 14th

www.budgetlodgeinn.net, budgetlodgeinn@yahoo.com



Abilene's Holiday Inn Express & Suites (110 E. Lafayette Ave., Abilene, KS 67410) is offering a break of about \$20 a night for reunion attendees. Call (785) 263-4049 no later than June 25, 2015, and mention that you are with the Seeley Genealogical Society.

(785) 263-3600

Covered Wagon Campground

803 S. Buckeye

www.coveredwagonrvpark.com

(785) 263-2343

If you are not able to secure reservations at any of these places, there is additional lodging in Salina, Chapman, Junction City, and other locations not too far from Abilene.



Site Location Nomination Form

FOR THE

SGS 2017 International Reunion

NOTE: Please send to the SGS President by July 1, 2015.

Kathie Olsen, 777 E. South Temple, Apt. 13H, Salt Lake City, UT 84102, (801) 355-0301, katherinemolsen@gmail.com

The SGS Executive Board will consider nominations at the Board Meeting of elected and appointed officers on Sunday, July 26, 2015. Recommendations will be presented at the Membership Meeting and voted on at that time.

I WOULD LIKE THE SGS EXECUTIVE BOARD AND APPOINTED OFFICERS TO CONSIDER AS A POSSIBLE SITE FOR THE 2017 REUNION THE FOLLOWING CITY:

SPECIAL CONNECTIONS TO SGS OR SEELEY FAMILY MEMBERS:

CONVENIENT LOCATION, TRANSPORTATION, PRICE CONSIDERATIONS, ACTIVITIES IN THE AREA, OR POTENTIAL SPEAKERS (PLEASE EXPLAIN):

I am willing to serve on the committee if this site is selected

☐ YES ☐ NO

Include a local tourist bureau brochure, if available.

NAME (FIRST, MIDDLE INITIAL, LAST)

E-MAIL ADDRESS

SIGNATURE

PHONE NUMBER



Registration Form

SGS 2015 International Reunion

Abilene, Kansas

July 27 - 29, 2015

ATTENDEE NAME (FIRST, MIDDLE INITIAL, LAST): SEELEY LINE (ROBERT, OBADIAH, OTHER):	STREET ADDRESS:
<input type="checkbox"/> SSG MEMBER <input type="checkbox"/> SGS LIFE MEMBER <input type="checkbox"/> NOT AN SGS MEMBER	E-MAIL ADDRESS:
ADDITIONAL ATTENDEE NAME (FIRST, MIDDLE INITIAL, LAST):	RELATIONSHIP:
<input type="checkbox"/> SSG MEMBER <input type="checkbox"/> SGS LIFE MEMBER <input type="checkbox"/> NOT AN SGS MEMBER	E-MAIL ADDRESS:
ADDITIONAL ATTENDEE NAME (FIRST, MIDDLE INITIAL, LAST):	RELATIONSHIP:
<input type="checkbox"/> SSG MEMBER <input type="checkbox"/> SGS LIFE MEMBER <input type="checkbox"/> NOT AN SGS MEMBER	E-MAIL ADDRESS:
ADDITIONAL ATTENDEE NAME (FIRST, MIDDLE INITIAL, LAST):	RELATIONSHIP:
<input type="checkbox"/> SSG MEMBER <input type="checkbox"/> SGS LIFE MEMBER <input type="checkbox"/> NOT AN SGS MEMBER	E-MAIL ADDRESS:

LODGING

(1) CALL THE HOLIDAY INN EXPRESS AND SUITES (A NON-SMOKING HOTEL) AT (785) 263-4049 FOR RESERVATIONS NO LATER THAN JUNE 25, 2015, FOR THE GROUP RATE OF \$99.00 PER NIGHT PLUS TAX; MENTION THE SEELEY GENEALOGICAL SOCIETY, SPECIFY HANDICAP ACCOMMODATIONS, IF NEEDED, AND SPECIFY A KING BED OR TWO DOUBLE BEDS; OR (2) SEE OTHER LODGING OPTIONS IN THE FEBRUARY SGS NEWSLETTER.

REUNION EXPENSES

EARLY BIRD (Prior to June 25) REGISTRATION FEE	# ATTENDING:	@\$30.00 EA.	SUBTOTAL:
FULL REGISTRATION FEE (Reg. Folder, Speakers, Meeting Room Expenses)	# ATTENDING:	@\$35.00 EA.	SUBTOTAL:
DAILY REGISTRATION FEE (Reg. Folder, Speakers, Meeting Room Expenses)	# OF DAYS:	@\$12.00 EA.	SUBTOTAL:
MONDAY BREAKFAST (@Seelye Mansion Featuring Terry's Sweet Rolls, Fruit, Etc.)	# ATTENDING:	@FREE	SUBTOTAL:
MONDAY A.M. TOUR (Dickinson County Heritage Center and Eisenhower Center)	# ATTENDING:	@\$4.00 EA.	SUBTOTAL:
MONDAY A.M. TOUR (Trolley Tour of Abilene and Visit to Chocolate Factory)	# ATTENDING:	@\$10.00 EA.	SUBTOTAL:
MONDAY LUNCH (Boxed Lunch with Ham Sandwich)	# ATTENDING:	@\$9.00 EA.	SUBTOTAL:
MONDAY LUNCH (Boxed Lunch with Turkey Sandwich)	# ATTENDING:	@\$9.00 EA.	SUBTOTAL:
MONDAY LUNCH (Boxed Lunch with Vegetarian Sandwich)	# ATTENDING:	@\$9.00 EA.	SUBTOTAL:
MONDAY P.M. TOUR: (Dickinson County Heritage Center and Eisenhower Center)	# ATTENDING:	@\$4.00 EA.	SUBTOTAL:
MONDAY P.M. TOUR (Trolley Tour of Abilene and Visit to Chocolate Factory)	# ATTENDING:	@\$10.00 EA.	SUBTOTAL:
MONDAY DINNER (At The Hitching Post Restaurant w/Barbeque Beef)	# ATTENDING:	@\$20.00 EA.	SUBTOTAL:
MONDAY DINNER (At The Hitching Post Restaurant w/Roast Pork)	# ATTENDING:	@\$20.00 EA.	SUBTOTAL:
MONDAY DINNER (At The Hitching Post Restaurant w/Vegetarian Meal)	# ATTENDING:	@\$20.00 EA.	SUBTOTAL:
MONDAY NIGHT TRAIN RIDE (Abilene & Smoky Valley Railroad)	# ATTENDING:	@\$12.00 EA.	SUBTOTAL:
TUESDAY LUNCH (Boxed Lunch with Ham Sandwich)	# ATTENDING:	@\$9.00 EA.	SUBTOTAL:
TUESDAY LUNCH (Boxed Lunch with Turkey Sandwich)	# ATTENDING:	@\$9.00 EA.	SUBTOTAL:
TUESDAY LUNCH (Boxed Lunch with Vegetarian Sandwich)	# ATTENDING:	@\$9.00 EA.	SUBTOTAL:
TUESDAY CHILD CARE (Parents Should Order A Boxed Lunch For Their Children)	# ATTENDING:	@\$10.00 EA.	SUBTOTAL:
TUESDAY DINNER (Fried Chicken Buffet catered by The Brookville Hotel)	# ATTENDING:	@\$20.00 EA.	SUBTOTAL:
WEDNESDAY DINNER (Tender Beef Brisket)	# ATTENDING:	@\$25.00 EA.	SUBTOTAL:
WEDNESDAY DINNER (Coq Au Vin)	# ATTENDING:	@\$25.00 EA.	SUBTOTAL:
WEDNESDAY DINNER (Stuffed Baked Squash)	# ATTENDING:	@\$25.00 EA.	SUBTOTAL:
			TOTAL:

SEND CHECK (PAYABLE TO SGS) ALONG WITH THIS COMPLETED REGISTRATION FORM TO:

KATHERINE M. OLSEN, PRESIDENT
SEELEY GENEALOGICAL SOCIETY
777 EAST SOUTH TEMPLE, APT. 13H
SALT LAKE CITY UT 84102-1214

FOR MORE INFORMATION, CONTACT KATHIE AT 801-355-0301 OR KATHERINEMOLSEN@GMAIL.COM

PLEASE REGISTER EARLY TO GIVE KATHIE TIME TO PREPARE NAME TAGS, MEAL TICKETS AND REGISTRATION PACKETS. PLEASE ENSURE THAT COMPLETED REGISTRATION FORMS AND CHECKS ARE RECEIVED BY KATHIE OLSEN BEFORE MONDAY, JULY 13, 2015.

SGS MUST CONFIRM MEAL NUMBERS AND PARTICIPATION IN TOURS NO LATER THAN MONDAY, JULY 13, 2015.

The SGS Reunion in Abilene Promises to be a Family Trip for All Ages

Story by Cecilia Harris and AbileneCityHall.com

It is a typical dilemma for many families. You have a couple of teenagers and a six-year-old, and they are of both sexes. So where do you go on vacation and make it a fun experience for



The Abilene & Smoky Valley Railroad is one of the many fascinating things to do in Abilene. A ride on this historic train is on the Reunion Agenda for Monday, July 27.

all the kids but still reach your goal of a quiet family getaway far from theme parks and video game palaces? Try Abilene, Kan.

Here the younger kids can explore the meager childhood home of President Dwight Eisenhower, while the teenagers play fun video games as they gain knowledge about the 1950s at the Eisenhower Presidential Library, Museum, and Boyhood Home. Then at the Dickinson Co. Heritage Center, the young children can pet a buffalo head and ride a turn-of-the-century carousel, while the older ones talk to each other on old-time telephone equipment and explore the big barn.



The Eisenhower Presidential Library, Museum, and Boyhood Home, all located in Abilene, are among the major attractions of the entire Midwest.

All ages can enjoy an excursion train pulled through the valley by a diesel engine or a restored steam engine and Old Abilene Town where they can drink sarsaparilla and watch can-can dancers and gunfighters. Step across the street and pet a former racing greyhound at the Greyhound Hall of Fame, view greyhound artwork and history, and watch a televised race. Split up and send the boys to watch the greyhounds run at the Abilene Greyhound Park or to a ballgame in the park, while the girls tour a turn-of-the-century mansion and have tea at Abilene's Victorian Inn.

Spend some time shopping in the historic downtown area where the boys can check out skateboards and an old-fashioned soda fountain, while the girls meander through shops filled with handmade jewelry, custom-scented hand-poured candles, quilting fabric, bone china teapots, home décor, books, and antiques. Then visit the Russell Stover Chocolate Factory and outlet for treats sure to please everyone.

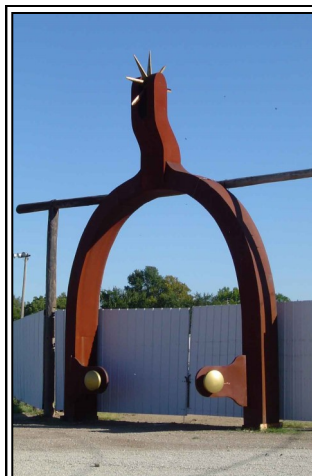
Did you know that Abilene was named by the Smithsonian as one of the top twenty small towns in America to visit? Find out more about things to do in Abilene at city website, <http://www.abilenecityhall.com/index.aspx?NID=9>. Among the attractions listed there are:

- Abilene & Smoky Valley Railroad Excursion Train—This 10-mile excursion train ride through the Smoky River Hill Valley features a 100-year-old wooden coach dining car and other vintage equipment. It is also part of the itinerary for the SGS 2015 Reunion, Monday, July 27, 7:30 to 9 p.m. (with \$12 reservation).



The first day of the Abilene Reunion will be spent on the grounds of the historic Seelye Mansion. The Mansion's current owner, long-time SGS Member Terry Tietjens, will offer tours of the mansion and its grounds which are co-located with the Seelye Research Center.

- Five Star Museum District—Including five world-class museums located within a four-square block area, centered by the Eisenhower Presidential Library and Museum. All are within walking distance. Museums include:
 - Eisenhower Presidential Library, Museum, and Boyhood Home (also on the Reunion itinerary)
 - Greyhound Hall of Fame
 - Old Abilene Town
 - Dickinson Co. Heritage Center (also on the Reunion itinerary)
 - Jeffcoat Photography Museum
 - Kansas Auto Racing Museum
- Mansions & Museums—Abilene is known for its historic mansions and buildings, with twenty-one structures on the National Register of Historic Places. Museums and mansions include



The world's largest spur is in Abilene at the Eisenhower Park Fairgrounds, which, following the SGS Reunion, will host the Central Kansas Free Fair July 29-Aug. 4, 2015.

- C.L. Brown Mansion
- Seelye Mansion
- The Arts—Enjoy cultural art throughout the community. Murals, sculptures, WPA limestone structures, live professional theatre, artisan shops, even the world's largest spur, crafted from iron, will intrigue the art lover. Visit the following:
 - American Indian Art Ctr
 - Carnegie Library
 - Eisenhower Mural
 - Eisenhower Park
 - Great Plains Theatre
 - Little Ike Park
 - World's Largest Spur

Finally, you can enjoy an abundance of outdoor activities in Abilene, including frisbee golf, walking and biking trails, and more, and after you have worked up an appetite, you will have your choice of a variety of franchise and uniquely Abilene eating establishments to suit every taste. Download a map of the city at the website and begin planning your visit today!

Quilt Donated to Raffle at Abilene Reunion

By Jesse Crisler, SGS 2nd Vice President



Long-time SGS member Toots Brundage has donated a beautiful quilt to the Society to be raffled off at this year's reunion in Abilene. She had previously donated one to the Justus Azel Seelye Family

Organization for a silent auction at its last reunion in August 2014. The prevailing color of that one was blue, while the new quilt's main color is green in the famous Dresden Plates pattern. Hand-sewn and quilted, the quilt is a virtual square, measuring 100' x 100'.

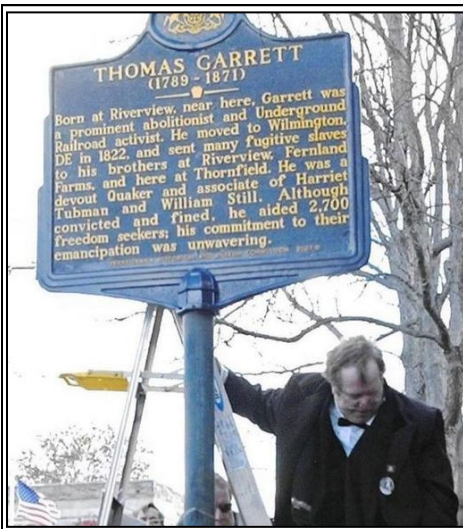
Reunion attendees can purchase tickets for the quilt at the reunion, but anyone can purchase a ticket in advance. Tickets will be \$10.00 each, and all proceeds will be put in the SGS operating fund. Handmade quilts such as this one often sell for hundreds of dollars at quilt shops, so we are especially grateful to Toots for her generosity.

If you wish to purchase a ticket (or several!), send a check to Jesse Crisler, SGS Second Vice President (contact information on p. 15 of this newsletter). Purchase a ticket or two now and then purchase another in Abilene at the reunion. The drawing for the quilt will be held at the Membership Meeting, and the lucky winner can then claim this wonderful keepsake as a memento of this year's reunion. What makes the quilt even more meaningful is that this reunion also commemorates the Golden Anniversary of SGS.

Another Seeley "Cousin" Honors His Ancestors

By Linda Crocker, SGS Chief Genealogist

Robert E. Seeley (seeley1022@aol.com), pictured here unveiling an historical marker for Thomas Garrett in Pennsylvania, has recently launched a campaign to have Thomas Garrett and two other abolitionists (John Hunn and Samuel Burris) pardoned by current Delaware governor Jack Markell. Seeley is a descendant of Thomas Garrett, a prominent Quaker who worked with Harriet Tubman and others to help more than 2700 slaves make their way to freedom. Residing in Wilmington, Del., he also provided funds for land for the establishment of Mother Africa Union Church, the nation's first fully independent black church, and spent time helping blacks learn to read and write as well as learn to teach others. After Garrett's conviction, he was heavily fined, and his criminal record remains.



Seeley was inspired to act when he learned that outgoing governor Pat Quinn of Illinois granted New Year's Eve clemency to three abolitionists convicted of the crimes of hiding and helping escaped slaves. Seeley has long been involved in honoring Garrett, including portraying him to schoolchildren. He even created a Facebook page in his honor: <https://www.facebook.com/www.thomasgarrett.org>

Seeley lives in Pennsylvania near the Garrett family home. He is a descendant of William Seeley (born in 1808 in Ireland), who came to the United States around 1838 and died in Philadelphia in 1874. Thomas Garrett is an ancestor of Robert's paternal grandmother, May Plumley. Thanks to SGS member Douglas Wenny for bringing this story to our attention.

Found! Class Ring Returned after 37 Years

Story by Lynda Simmons, SGS Membership Chair

What are the chances that a college class ring lost in 1977 would be returned to its owner in 2014? Thanks to a thoughtful man and SGS, that is exactly what happened!

In July 2014, Dr. Richard Suinn, an emeritus professor at Colorado State University in Fort Collins, Colo., found a Rice University class ring from 1977 inscribed with the name of Brian Reginald Seely. Suinn got in touch with me to determine whether Brian was a member of SGS. Brian was not a member at that time, and his personal information was not known. Paul Taylor, SGS 1st Vice President, then put information about the ring on the SGS Facebook page.

Soon Brian wrote Lynda to say that his neighbor had seen the story about his ring on Facebook and told Brian about it. Lynda connected Suinn and Brian with each other. They exchanged information, and Suinn returned

Brian's lost ring to him after twenty-seven years.

Brian's ring had slipped off his finger when he was in Colorado having his picture taken by a photographer. He had searched in vain for his ring and did not think he would ever find it. Thanks to Suinn's kind persistence, SGS's facilitation, and Brian's neighbor seeing the SGS Facebook message, Brian wears his class ring on his finger again.

Brian Seely's ancestors moved to North Texas in Weiss County in the late 1800s. Their Seely graveyard is outside Rhome, Texas. He is a descendant of Obadiah Seely (SGS# 4).



Brian Seely from his college days at Rice University in Houston.

Update from Seelye Research Center Librarian

Story by Pam Turner, SRC Librarian

I hope all of you had a wonderful holiday season and are surviving the winter weather. I do not have much to report, but I wanted to update you on the status of our newest donation to the SRC.

During the SGS Board Meeting in July, Jesse Crisler brought to the Seelye Research Center (SRC) notebooks and other material containing original research notes from the 1960s which had been donated by Esther L. Walter. We discussed the best way to display this donation and decided to display the notebooks upstairs in the SRC, as reported in the August Newsletter under the new business section of the Executive Board Meeting minutes.

That plan has now changed. These items are now to be displayed downstairs in a separate section of the SRC. Jim Seeley has donated a new wood showcase for this display which should be in place in time for the SGS reunion in July. I look forward to having these and other items ready for the reunion.

In other news, I thought I would share a story from my never ending attempt to learn more about genealogy.

I recently started a home study course on genealogy. The first chapter covered how to interview relatives. As I listened to the professor lecture on the best way to approach people, I thought to myself, "I am too late to do this. All of my older relatives are gone, and I never thought to write down the stories I heard. I always thought someone would be around to tell these stories."

Now I know that some of you might be thinking, "My kids don't care about the family history, and I've already documented our lineage." That is true. Most younger

people do not have time for history nowadays, but chances are that their minds may change as they age, and you might not be around to answer their questions, even if they know the ones to ask.

Yes, you have documented your lineage, but have you documented the histories? Do you know how your parents or grandparents met or what types of jobs they did? What about births? Have you written the stories of your birth and your children's births? When I talk to people about their birth, there is usually a story attached—the weather was horrendous, their mother could not make it to the hospital, dad passed out, etc.

These are the types of family stories I'm talking about: the stories that make your family special. It does not really matter from whom we descend if we do not "know" the people behind the names and numbers. I understand that your family might not seem interested in your stories now, but I guarantee that will change after you are gone. Please do them a favor and write down your stories for them, keep them with your important documents, send copies to the SRC, and leave them a great family legacy. They will be grateful to you when their children ask how grandma and grandpa met and what their wedding was like.

Please do not let your family stories and memories become lost: if they mean something to you, they will mean something to your descendants. Do not wait for someone to ask you; start writing today!



Reunion Schedule (continued from page 3)

Noon to 1 p.m.: Registration

Noon to 1 p.m.: Boxed Lunch

Choice of roast beef, tuna salad, or vegetarian sandwich, chips, fruit, cookie, and choice of coffee, lemonade, or water (Reservation with \$9.00 needed in advance)

1 p.m. to 5 p.m.: Afternoon Session

Seeleys in Early Kansas by Terry Tietjens, Ivey Harris, Ruthetta Seelye Hansen, and other locals

My Seeley Ancestors by reunion attendees (Please volunteer to tell us about your ancestor! The presentations can be 5 to 15 minutes each.)

Current Research Results about Other Kansas Seeleys by Linda Crocker, SGS Chief Genealogist

A Discussion of the Seeley/Seelye/Seely/Seela Surname by Linda Crocker, SGS Chief Genealogist

(Child Care/Youth Group is Available—\$10.00 per child, reservation needed in advance)

6 p.m. to 9 p.m.: Dinner and Speaker at Abilene Civic Ctr.

The History of SGS and A Conversation with one of our Founding Members, Esther Houtz Walter, led and moderated by Jesse Crisler, SGS 2nd Vice President

Meal catered by the Brookville Hotel, renowned throughout the state of Kansas, featuring a buffet of fried chicken and trimmings with musical entertainment to be provided during dinner (Reservation with \$20.00

needed in advance)

Wednesday, July 29, 2015

Abilene Civic Center

8 a.m. to 9 a.m.: Registration

9 a.m. to 11 a.m.: Membership Meeting

Including reports on the state of the Society, elections, site selection vote on recommendations from SGS Board, discussion of possible changes to the Constitution and Bylaws, and new business. All interested persons are invited to attend.

11 a.m.: Group photo

Noon to 1 p.m.: Lunch on your own

1 p.m. to 5:30 p.m.: Free Time

Visit downtown, museums, antique shops, art galleries, old-fashioned soda fountain, farmer's market, walking tour of Abilene, etc.

4 p.m. to 5:30 p.m.: New SGS Elected and Appointed Officers Meeting at the Seelye Research Center

All interested persons are invited to attend.

6 p.m. to 9 p.m. Dinner and Speaker at the Eisenhower Presidential Library Courtyard

Evening will feature an Awards and Recognition ceremony, installation of 2015-2017 SGS officers, musical entertainment, and a special speaker. Meal catered by AppleMint Catering with choice of tender beef brisket, coq au vin (chicken breast), or stuffed baked squash (Reservation with \$25.00 needed in advance)

Seeleys in Michigan and Wisconsin

By Jesse Crisler, SGS 2nd Vice President

Many branches of the Seeley family ended up in Michigan and Wisconsin at some point, one of which descends from Justus Azel Seelye and Mehitable Bennett, while another may descend from Justus Azel's father, Justus Seeley.

When the extended Justus Azel Seelye (SGS# 836) family emigrated to the U.S. from Ontario, Can., they left behind four of their daughters and their families—Rachael (SGS# 2231), Rebecca (SGS# 2332), Mary (SGS# 2335), and Sarah Ann (SGS# 2338). Eventually, the younger three of these all reunited with their parents in Lee Co., Iowa, remaining either there or across the river in Hancock Co., Ill., when Justus Azel and Mehitable, their three sons and their families, and their daughter Elizabeth (SGS# 2334) and her family all left Iowa to join other Mormons on a trek across Iowa in 1846 and thence to Utah in 1847.

The only child who stayed in Canada, then, was the oldest daughter, Rachael, who had married William Parnell Webb around 1824; they had eight children, five of whom grew to maturity and married. Since both Rachael and Parnell had grown up in the United States, it is no surprise that, soon after her marriage to Thomas Baldwin Holliday in 1856, Lydia, one of their daughters, with her husband and their infant son, William Parnell Holliday, left Canada to settle due south across Lake Ontario in Oswego Co., NY. Besides William, they had nine more children. Today, generations later, descendants of several of these children still live in this same area of upstate New York.



Thomas Baldwin Holliday and Lydia Webb

But that oldest son, William Parnell Holliday, at some point after the 1880 census was taken on June 1, opted to move further west to Genesee Co. in east central Michigan, where on Feb. 28, 1881, he and Rose L. Griffin married. They seem not to have remained there long, however, because all of their children, according to the 1900 census, were born back in Oswego Co., NY. Even so, by the end of the century the family had returned to Michigan, settling in Pontiac in Oakland Co., just south of Genesee Co. Whether William came with them is unknown, since he had apparently died by this point, for Rose lists herself as a widow on the 1900 census.

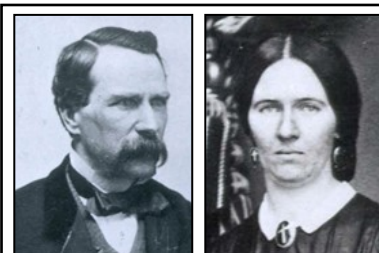
William and Rose's known children number five. The oldest, Eva S., born in November 1881, later married a young Canadian painter named David Newell and moved with him back to Canada. Ida M., second daughter, was born in June 1883, and married Elmer E. De Forest on Dec. 21, 1904, in Lansing. A third daughter, Clara M., born in Jun. 1886, married Clare Sylvester Rowley, a native of Shiawassee Co., Mich., just west of Genesee Co.; in 1910 they were living in Flint, Mich., with their daughter Irene, and he was working as a gear cutter in Michigan's infant auto industry. Clara and possibly Irene as well seem to have died not long after this, but Clare remarried and lived until 1962; he is buried in his hometown of Laingsburg.

George T. Holliday, first son, was born Nov. 1, 1887, married Jeannette May Hilliker, had daughters Rose M. and Beatrice, and lived in Detroit. The last child, Charles L., was born Jan. 5, 1897, married Eleanor A. Goltz, had a daughter named Donna, and died in Belleville, Wayne, Mich., in August 1973.

While diligent research has yielded very little else about this branch of Justus Azel Seeley's family, such is not the case with another family of Seeleys, who lived not in Michigan, but in Wisconsin. Guy Seeley (SGS# 835), possibly a brother of Justus Azel, married Rebecca James in 1798 in Connecticut, and two years later they moved to Bellefontaine, Mo., near St. Louis, where their four sons were born.

About their oldest son, Hiram (SGS# 2326), little is known, save that he was born in 1801 and apparently died in March 1830. Their third son, Anthony Stewart (SGS# 2328), born Dec. 12, 1812, married Laney Hodges, had eleven children, and settled in Green Co., Ill., where he died Aug. 24, 1885. The youngest boy, Americus Guy (SGS# 2329), was born in 1815. In 1840 he married Keziah Hodges, his sister-in-law's sister, in Grant Co., Wisc., having purchased 175 acres of land there the year before; indeed, between 1839 and 1845, he purchased or homesteaded over 575 acres in Grant, Lafayette, and Iowa counties. Even so, by 1860, he and his family had moved to Green Co., Ill., probably because his older brother Anthony Stewart was living there. Descendants of both of these Seeley brothers lived in Illinois until well into the twentieth century.

Meanwhile, Guy and Rebecca's second son, David James Seeley (SGS# 2327), born June 15, 1805, also left



David James Seeley (SGS# 2327) and wife Sophia Shattuck

Missouri for Greene Co., Ill., though by 1835 he had settled in Lafayette Co., Wisc. Like his younger brother Americus, he owned considerable land, actually far more than Americus: between 1828 and 1835 he purchased nearly 760

acres in Greene and Scott counties in Illinois; in Wisconsin he purchased or homesteaded almost twice that.

Clearly a prosperous landowner, David died in Elk Grove, Lafayette, Wisc., on May 4, 1868; his wife, Sophia Shattuck, whom he married in 1828, outlived him, dying in Dubuque, Dubuque, Iowa, in 1897. The couple had nine children. Their oldest, daughter, Rebecca Ann, born in 1829, became a nun, taking the name of Mary Baptist Seeley; though part of a religious order, the Sisters of Charity, she seems to have enjoyed some degree of freedom, for in 1880 she and nine fellow nuns are living in a boarding house. Her mother later joined her at her abbey, where both are buried in the Mount Carmel Cemetery in Dubuque. The next two children, Emily and Hiram, born respectively in 1830 and 1835, seem to have died as teenagers in Wisconsin, as did another daughter,

Please See Michigan, Wisconsin Seeleys Page 11

Y-DNA: What It Is and What It Is Not

Story by Walt Seelye, SGS DNA Lineage Project Manager

DNA analysis is an incredible tool when used in conjunction with regular family research. It can connect you with living cousins, lead your ancestral investigations in promising new directions, and help you avoid dead ends. It can provide strong evidence of an ancestral connection, and even suggest when and where the most recent common ancestor might have lived.

Although genetic genealogy can add valuable information to your family tree, it does have limitations. The following points may encourage you to use DNA analysis but not to expect the impossible.

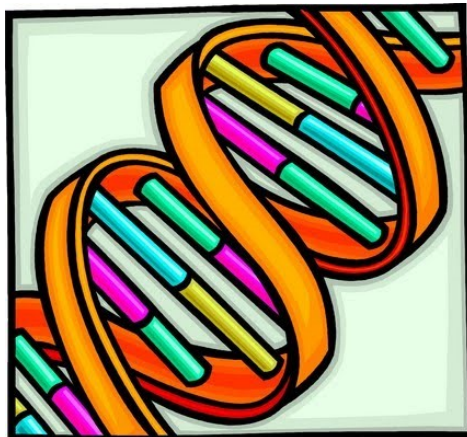
DNA no longer requires drawing blood; since every cell of your body contains your DNA, even your saliva carries enough material to analyze. Getting a DNA sample today usually means swabbing the inside of your cheek.

DNA analysis for genealogy will not reveal medical information. Your DNA contains six billion base pairs, and it would cost too much and take too long to examine all of them. Genetic genealogy testing examines a few hundred at most, and it is looking for ancestral traces, not medical markers.

DNA analysis is a complement to, not a substitute for, other research. It is merely one of many tools in the genealogist's toolbox. DNA test results alone cannot fill in your family tree or break through your brick walls. For example, although a test can determine a genetic link between two or more individuals, it cannot reveal the exact family relationship between those individuals. You could get a close Y-DNA match to your cousin, your grandfather, or your distant ancestor. A paper trail is needed to clarify an exact family tree.

Women, you do not inherit your father's Y chromosome, there is a very good chance that there is another living source of that Y-DNA. For instance, is there a brother or an uncle, who would have inherited Y-DNA? There are usually several different sources for the DNA you are looking for.

How do you analyze DNA from a deceased ancestor? You look at living descendants to learn about your ancestors; that is the whole reason for genetic DNA! For example, a man's Y-DNA was given to him by his father, who received it from his father, and so on back through time.



Update of the November 2014 SGS Newsletter Article about Charles H. Seeley

By Linda Crocker, SGS Chief Genealogist

Kathie Olsen looked for this family in FamilySearch. She also searched for Margaret A. Seeley, widow of Charles, and found her, aged 75, in the 1920 Pennsylvania census living with a Carl family.

Kathie could not find a cemetery record for her, however. I searched again and found Margaret Seeley, aged 85, in Colley, Sullivan, Pa., living as a boarder in the household of blacksmith

Edward J. Butts and his wife Lillian in the 1930 census. I imagined that she was buried in the Forksville Cemetery in Sullivan Co. with her husband Charles, but she was not listed in records I found.

Then I decided to search Pennsylvania death records and found her listed as "Mr. Margaret Suley, widow of Chas. Suley"; however, the surname is definitely Seeley, a transcription error. The record says she was born June 15, 1842, and died Dec. 22, 1930, at Colley; her father's name was Davidson, the informant was Lillian Butts, and burial was at Forksville.



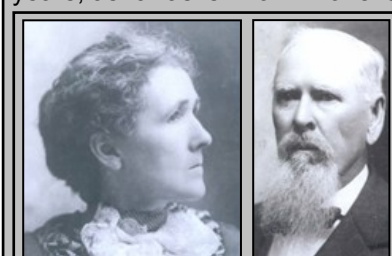
Seeley House in Forksville, Pa. in about 1908. Known as the Forksville House before its purchase in 1893 by Charles H. Seeley. Photo Reprinted in the Sullivan Review on April 26, 2007.

Michigan, Wisconsin Seeleys

(continued from page 10)

Fanny, born in 1847. The youngest daughter, Bessie, born in 1851, died unmarried in 1882, and is buried near her father and maternal grandfather, George Clinton Shattuck, in Elk Grove.

Of the remaining four children, Mary Cordelia, who was born in 1836, married Thomas Augustus Goodell in Iowa in 1866, thence moving to Lafayette Co. by 1870; their descendants remained in Wisconsin, though none of their grandchildren had children. Another daughter, Mary Ellen, was born in 1839; she married Tarleton Dunn in 1861 in Lafayette Co., and they had two children, but all four of them had died by 1892. Rufus David, born in 1841, in 1862 married Julia Emily Dunn, a sister of his brother-in-law, and they also lived in Wisconsin, first in Lafayette Co., and then in Grant Co.; while many of their nine children and grandchildren lived in Wisconsin for years, as far as is known none is there now.



Catherine Adelaide Morris married John Raphael Quigley

Finally, Catherine Adelaide Morris, born in 1843, married John Raphael Quigley in Lafayette Co. in 1870, moved to Montana the next year, bore eight children, and never returned.

Thus, though this Seeley family began life with glowing prospects in Wisconsin, no descendants currently live there.

President's Report *(continued from page 2)*

to the Executive Board in advance of the Membership Meeting to be held at the Abilene reunion. The Executive Board will consider nominations and then present its recommendations at the Membership Meeting for approval. A site selection form is in this newsletter. Please take time now to think about a great place for the next reunion and submit a nomination to me by mail or email before July 15, 2015.

There will also be discussions in the Executive Board Meeting and the Membership Meeting concerning changes to the current SGS dues structure and the life membership policy. As mentioned previously, the present dues structure does not provide enough funds to support the goals and needs of SGS. If you have concerns or questions about these issues and will be unable to be at

the Abilene reunion, please get in touch with me or another member of the Executive Board.

Please feel free to send me suggestions, concerns, or comments.

DON'T FORGET YOUR DUES

Not sure if your dues are due?

Check out the address label on this issue of your Newsletter. The second line gives you the month and year your dues are paid to.

10/15 means Paul & Carolyn's dues are paid up to October 1, 2015

Paul & Carolyn Taylor
Paid To: 10/15
3848 Frazier Lane
Virginia Beach, VA 23456

SGS Queries

*Coordinated and Compiled by SGS Query Editor Linda Crocker
(Data Current as of January 16, 2015)*

Query number is 2 digit year, 2 digit month of newsletter, query sequence number.

Please send your queries to SGS Query Editor Linda Crocker at llbc100@msn.com or mail to Linda at home (see inside back cover). Queries are assigned a query number by the Query Editor, researched, and then sent to the Query Team and Area Coordinators for their input. Linda summarizes each query and any responses for inclusion in the newsletter.

If you have any information on the queries below, contact the submitter, but also remember to send a copy of the information to Linda, so the query can be updated in the next newsletter.

Query Updates

Update to Query 0302-6 Re: Levi Seeley b. 1789 NY

The original submitter was Donn M. Seeley (donn@xmission.com). We were recently contacted by Donald Kaus (dlkaus@centurytel.net), who is also a descendant of this Levi through his grandmother Edna, daughter of Daniel Webster, son of Alonzo, son of Levi. Levi was listed in the 1830 and 1840 censuses of Hinckley, Medina, OH, and then in 1850 in Delavan, Walworth, WI. He died in Reedsville, Sauk, WI, in 1859. The only good clues are that there was an older Nehemiah Seeley listed very near Levi in Medina Co. He does not seem old enough to have been Levi's father; perhaps he was an older brother or cousin. Donald would like to join the SAR, but he knows that a couple of Nehemiah Seeleys served in the Revolutionary War.

At this point it would be great to find a male Seeley-surnamed descendant of Levi who would be willing to undergo DNA testing. This might give some clues regarding those who may be close relatives. Nehemiah and Levi are both names used often in the Robert/Nathaniel line, but none of those known names lines up with our information on this Levi. Please get in touch with me if you can help.

Update to Query 1411-4 Submitted by Gayle Ann Livecchia (gayle.ann.livecchia@gmail.com)

Gayle had been working on getting a new stone for

Samuel Sayre, SGS# 444. Now she is getting a VA stone for Col. Sylvanus Seely, SGS# 447, a cousin of Samuel Sayre. Gayle found a descendant of Sylvanus who just joined the DAR under him and was willing to fill out an application for a stone. Gayle said the cemetery is quite excited, since its officials did not know it was possible to get new stones. Now she has been to Washington's headquarters, which was willing to have its transcription of Sylvanus Seely's diary scanned. Once that is done volunteers will be needed to compare scans to the transcription to ensure the scans are good. This can be done from home. If you would like to help with this project please get in touch with Gayle. Kudos to her for being interested in this project, which is not even for her family!

New Queries

1502-1 Submitted by Kathie Olsen (katherinemolsen@gmail.com)

SGS President Kathie Olsen received a request for help locating descendants of a Joseph Seeley who had an interest in an oil and gas field in California as early as 1933. The oil and gas field is near Bakersfield, CA. There is also an Elsie B. Seeley, believed to be connected to Joseph in some way, either as wife or daughter. Her trust also had interest in the oil and gas field. If this Joseph has died, then there would be an inheritance for descendants.

SGS Response:

1920 census San Francisco, San Francisco, CA

- Seeley, Joseph, age 54, b. NY, ENG, ENG, president lumber co.
- Seeley, Ella, wife, age 45, b. CA, NY, MA
- Seeley, Joseph, Jr., age 22, b. CA, NY, CA, office work for a stock broker
- Seeley, Harold S., age 24, son-in-law, widowed, b. CA, TN, US, ins. adjuster
- Smith, Eva, age 40, single, sister-in-law, b. CA, NY, MA

In 1910 in San Francisco the family included Joseph, age 44, md. 18 yrs. to Ella, age 37, borne 2 ch., 2 living, Joseph, Jr., age 12, Ruth B., age 10, Eva Smith, age 33,

Please See SGS Queries Page 13

SGS Queries (continued from page 12)

and Ella Teresa Higgins, servant, age 28, b. IRE. I wondered if the census taker in 1920 had been sloppy: I doubted that Harold was really a Seeley.

Next I found a marriage announcement: "The marriage of Miss Ruth Seeley, daughter of Mr. and Mrs. Joseph Seeley, and Harold Gladstone Snodgrass, son of the late David F. Snodgrass, a pioneer banker of the San Joaquin valley, took place last Saturday afternoon at the home of the bride's parents.

"Miss Seeley is a graduate of one of the private schools in this city and was a student of the University of California. Snodgrass was also a student at the University and had passed the examinations at the naval school for his commission when the armistice was signed. He is a member of the Sigma Epsilon fraternity.

"Mrs. Glenn Knight attended the bride as a matron of honor, and Walter Frederich was best man, taking the place of Joseph Seeley, Jr., who is still in France with the postal service at Chaumont. The ring bearer was Walter Trefts Jr. and the ribbon bearers were Kenneth Gerrard and Philip J. Eisenmann. Rev. Frederick Clappett read the marriage service.

"The decorations at the Seeley home were unusually beautiful. The ceremony took place in the conservatory, which had been converted into a bower of Woodwardia ferne, with an altar at one end. Tall flowering rose trees that were thick with pink blossoms were on either side of the altar. Baskets of spring flowers here and there added to the attractive effect.

"Mr. and Mrs. Snodgrass are enjoying a honeymoon in Southern California and will be absent a fortnight" (published in the *San Francisco Chronicle*, April 14, 1919: 6).

The next question was "Why is Harold Snodgrass widowed so soon after his marriage?" I then found another article and thank Chris Havnar for accessing both of these for me: "Daughter of Joseph Seeley Shot by Guest/Rifle supposed not to be loaded ends life of Mrs. Harold G Snodgrass/Blights Naval Romance/Dead Girl Won During War by University of California Student

"Mrs. Harold Gladstone Snodgrass, a bride of three months, was accidentally shot and killed by Charles Fleishman, a guest, during a dinner party last night at the home of her father, Joseph Seeley, vice president of the Union League Club, at 152 Central Avenue. Young Fleishman and Snodgrass, who was recently discharged from the Navy, were executing the Naval manual of arms with a high-powered Springfield rifle the husband won in the service.

"Guest Did Not Know Rifle was Loaded.

"Fleishman did not know the rifle was loaded. He pulled the trigger and the bullet [ricocheted off] the wall of the living room and lodged in the neck of Mrs Snodgrass seated in an adjoining room, severing a big artery and causing death virtually instantaneously. Mr. and Mrs. Seeley and Mr. and Mrs. Martin Fleishman and Miss Genevieve Fleishman, parents and sister of young Fleishman, were in the house when the tragedy occurred. Mr. and Mrs. Snodgrass and the Seeleys were giving a dinner in honor of Miss Fleishman and Julius Rosenthal, a young importer from China, who[se] marriage is to be celebrated this week. Other guests were Dr Alfred

Roncovieri, Superintendent of Schools, Dr Louis Roncovieri, his son, and Miss Dorothy Clieve.

"Whole Company Hysterical When Policeman Arrives

"The whole company was hysterical with grief when policemen entered the home to investigate the tragedy. The shooting took place a few minutes before midnight. The guests assembled early in the evening to celebrate the betrothal of Miss Fleishman and Rosenthal. As a final bit of the evening's entertainment young Snodgrass exhibited the high-powered rifle he had won and went through the evolution of the manual of arms. 'Let me try it,' young Fleishman asked. The rifle was handed to him. Mrs. Snodgrass had gone to an adjoining room for a moment. Fleishman brought the rifle to his shoulder. He pointed it at the wall and, laughing, pulled the trigger. There was a report. A look of wonder and fear came to the young man's face. There was a moan from the next room.

"Husband and Parents Find Young Woman Dead

"There her husband and her parents found the lifeless body of Mrs. Snodgrass.

"Mrs. Snodgrass was 19 years old. Hers was a romance of the war. When Snodgrass, formerly a student at the University of California, was in a training camp for naval officers last September the engagement of the young couple was announced.

"Snodgrass sailed away. He returned and was discharged from the service last April and the marriage took place at the home of the Seeleys April 12. Mrs. Snodgrass was Miss Beatrice Ruth Seeley. She attended the University of California and was prominent socially there and in this city. Snodgrass is a son of the late Mrs. David Snodgrass of Bushnell Place. He is a member of the Sigma Phi Epsilon fraternity. Seeley is president of the Wendling-Nathan Company, wholesale lumber dealers of 110 Market Street. One night during October 1918 Seeley met 27 children singing patriotic songs on O'Farrell Street. After listening to the school children sing for a short time, Seeley gave to the woman that was caring for them \$1350, with instructions to buy a Liberty bond for each child" (Published in the *San Francisco Chronicle*, July 27, 1919: 1).

An article in the next day's paper gives further details, including the fact that young Fleishman was only sixteen years old. Apparently, he and Snodgrass thought that all cartridges had been removed from the rifle, not realizing that one remained in the magazine. The young men looked in the barrel, which was empty, but did not know that upon closing the rifle a cartridge was automatically loaded. Fleishman was charged with manslaughter and remained under arrest until the findings of the coroner's jury were announced.

I also found death certificate transcriptions and obituaries for both Joseph Seeley and Joseph Seeley, Jr., on the SGS website. They indicate that Joseph was president of Italo Petroleum Corp. as well as Wendling-Nathan. Joseph's death certificate indicates that his wife is Elsa, though she appears as Ella everywhere else, including her own death certificate. He died in 1936. Joseph, Jr., died in 1946. His obituary mentions his wife, Dorothy, but no children. Chris found an earlier marriage for Joseph, Jr., to Maybelle May Mansfield in 1923. They

Please See Queries Page 14

SGS Queries *(continued from page 13)*

are together in the 1930 census, but Joseph, Jr., is divorced in 1940.

There is an Elsie B. Seeley listed in CA vital records, but she does not seem to be related, having been born in MO in 1892.

I have not been able to identify Joseph in any census record before 1900.

1900 census, San Francisco, San Francisco, CA

- Seeley, Joseph, b. Jun. 1866, MI, unknown, MI, blacksmith, md. 3 yrs. to
- Seeley, Ella, b. Nov. 1872, CA, NY, MA
- Seeley, Joseph, b. Nov. 1897; Beatrice, b. Mar 1900, both b. CA, MI, CA
- Davis, Charlotte, b. Sept. 1878 CA, WV, LA, black servant

We would love to discover the origins of Joseph. Was he born in Yonkers, Westchester, NY, as his death certificate says, or in Michigan? Who were his parents? Perhaps he had siblings with descendants who would benefit from the oil and gas trusts. If you have any leads, please get in touch with me or Kathie.

Query 1502-2 Submitted by Suzanne Garbarini (dsagarbarini@gmail.com)

Suzanne's ancestor, Maria French, married Edwin Collier/Colyer in 1842 in Wallingford, CT. They lived in Woodbridge and New Haven, CT. The first mention Suzanne has ever found of Maria was in the Catalogue of Members of the Congregational Church, North Haven, CT (1718 to 1871), which Maria joined in 1840, prior to her marriage. Older than her husband, she was b. 1808-1817 (her age differs by document). Suzanne found our information about Maria French, SGS# 1168, daughter of Charity/Charra Seeley, SGS# 380d, who was a daughter of Michael and Sarah Denton Seeley of Stratford, CT. Our information simply states that Maria married a Mr. Collier. Suzanne also found information on Julia Ann French (b. 1808-1810), who married William E. Waterbury in New Haven in 1833. This seems to correspond to Maria's sister, SGS# 1169. The Waterburys lived in New Haven, CT, and NYC. Mr. Waterbury died in NY, and his wife and son (George S.J. Waterbury) had returned to live in New Haven by 1853. Because Julia disappeared from city directories in the late 1870s, after living in New Haven for a couple of decades with her son, Suzanne assumes she probably died about that time, but she has not found any obituary or death record. Given the time period, it is unlikely that her parents' names would have been recorded on a death record. One of Maria French Collier's children was named George WATERBURY Collier, perhaps after her brother-in-law? She also named her first-born child Julia and another child Joseph, perhaps after her sister and brother?

While Suzanne has found some references to other children of Michael Seeley, she has not been able to locate information on Charity nor her husband Joseph B. French. She asked about our sources, hoping for a lead.

SGS Response: I have not been able to verify any of our information, using the sources listed in the SGS volumes that I can access. There is no exact birth or baptism date recorded for Charity nor exact marriage date nor birthdates for any of her children. Suzanne is going to try to find the St John's Church records mentioned as a resource. Please get in touch with me if you have any other

information about these Seeley descendants.

Suzanne also wonders whether there are any Seeley descendants who have done an autosomal DNA test. She has been gathering results of tests on her family members and would like to compare them to see whether there are some matches that would help narrow the search field.

Query 1502-3 Submitted by Douglas Drake (capndrakedav@konacondo.biz)

Douglas has traced his ancestry with actual documents back to Captain William Sprats, the renowned Connecticut architect, who married Elizabeth Seelye. He visited our website and found Elizabeth Seelye as SGS# 303, daughter of Justus Seelye and his second wife, Phoebe Bissell. Douglas wants to know our sources, so he can verify Elizabeth's parentage and help his sister be admitted to the DAR.

SGS Response: Elizabeth was born in 1763 in Litchfield, Litchfield, CT, died May 17, 1800, and is buried at Carver Falls Cemetery, West Haven, VT, wife of William Spratt. We list no children. Our information states that Justus's will mentioned his wife, Phoebe, "and all my children" and that he was insolvent, so that is no help. None of the other sources listed seems likely to have the data that Douglas needs (birth/baptismal record, marriage record listing parents, transfer of property, etc.). If you have (or can find) any information substantiating Elizabeth as a daughter of these parents, please send it to Douglas and send me a copy as well.

How to Submit a Query

If you would like to submit a query please follow a few guidelines.

Be specific and detailed: Give us all the information you have about the person or family in question, especially dates and locations.

What resources have you already consulted? The SGS publications or website? The census? Cemetery records? County histories? Family Bible? Others? (Specify.)

What exactly do you want to know? Parents' names and details? Sibling information? Information on a family marrying into the Seeley family? Our sources?

After your query is printed, please keep us informed about any information you receive or further progress you make on your own. Other members may be interested or related to your line.

We will publish an update to your query with any new information we receive. This may lead to even more information. One more name, date or place may be the key to linking your line to another. Your query will also be posted on our website. Make sure we have your current contact details—sometimes we get new information months or even years after your query appears.

How to Answer a Query

If you have information to share on queries from current or past issues, send it to the query submitter and also to Linda Crocker, Query Editor. **Please include the Query number**, preferably in the subject line of your email. Remember to cite your sources.

SGS Elected Officers & Board of Directors for 2013 - 2015

SGS Constitution, Art IV, Sect. 1: The elected officers of the Society shall be a President, First Vice-President, Second Vice-President, Secretary, Treasurer, Chief Genealogist, and three Directors elected from the general membership.

President

Katherine M. Olsen
777 E. South Temple, Apt. 13H
Salt Lake City, UT 84102
(801) 355-0301
katherinemolsen@gmail.com

1st Vice President & Publications Editor

Paul Taylor
4901 Seminary Rd Apt 1602
Alexandria, VA 22311
(757) 759-9551
paul.taylor.va@gmail.com

2nd Vice President

Jesse S. Crisler
2221 West 850 North
Provo, UT 84601
(801) 375-8004
jesse_crisler@byu.edu

Secretary

Camille Seeley Bell
93 North Valley View Drive
North Salt Lake, UT 84054
(801) 298-0279
onthego801@gmail.com

Treasurer

Sally Seeley
1442 Thousand Acres Rd.
Delanson, NY, 12053-2223
(518) 895-8009
sseeley3@nycap.rr.com

Chief Genealogist

Linda L Crocker
61 Ronald Reagan Drive, Westwood,
Parkersburg, WV 26101
(304) 210-5591
llbc100@msn.com

Director

Terry Tietjens
P.O. Box 337, 1105 N. Buckeye
Abilene, KS 67410
(785) 263-1084
seelyemansion@yahoo.com

Director

Wesley Waring
16179 89th Ave. N.
Maple Grove, MN 55311
(763) 494-3277
wesleyawaring@cs.com

Director & Historian

Ruthetta Seelye Hansen
1129 S County Line
McCracken, KS 67556
(785) 394-2316,
rhansen@qbta.net

SGS Appointed Officers & Volunteers for 2013 - 2015

SGS Constitution, Art IV, Sect. 1: "The President shall appoint an Ancestor Files Chair, a Membership Chair, a Publications Editor, Assistant Genealogists as required, and a Director for the National Research Center." **SGS By-Laws, Art. III, Section 9:** "The immediate past President shall be an ex-officio member of the board of directors and committees in a non-voting advisory capacity." **SGS By-Laws, Art. III, SECTION 10:** "The President, with the approval of the Executive Board, may establish other positions and collateral duties not named elsewhere."

Past President

James R. Seeley
4540 Marshall Run Circle # 108
Glen Allen, VA 23059
(804) 364-8101, jseeley36@gmail.com

Membership Chair

Lynda Simmons
125 Parkview Drive
Park City, UT 84098
(435) 649-9878 cell (801) 910-0300
summitkids@yahoo.com

Assistant Membership Chair

Margaret Petersen
2736 S Highland Drive #4
Salt Lake City, UT 84106
kpetersen7835@msn.com

Assistant Genealogist – Obadiah

Dian Little
18210 15th NE #102, PO Box 55607
Shoreline, WA 98155
(206) 417-9896, dianlittle@hotmail.com

Assistant Genealogist – Other Lines

Pauline Cilley Gamer
150 Westport Road
Wilton, CT 06897
nurse5836@yahoo.com

Assistant Genealogist – Robert/Nathaniel, Webmaster & SGS Ancestor File Co-Chair

Chris Havnar
625 Canyon Dr.
Pacifica, CA 94044
(650) 359-5617, chris.havnar@gmail.com

Query Editor/SGS Ancestor File Co-Chair

Linda L Crocker
61 Ronald Reagan Drive, Westwood,
Parkersburg, WV 26101
(304) 210-5591, llbc100@msn.com

Parliamentarian

George Seeley
1442 Thousand Acres Rd.
Delanson, NY, 12053-2223
(518) 895-8009, sseeley3@nycap.rr.com

Seelye Research Center

Terry Tietjens
P.O. Box 337, 1105 N. Buckeye
Abilene, KS 67410
(785) 263-1084,
seelyemansion@yahoo.com

Librarian, Seelye Research Center

Pamela D. Turner
1935 Okeechobee Drive
Colorado Springs, CO 80915-1743
Cello_t@comcast.net

SGS CD-ROM Project Director

Bob Seeley
861 SW 48th St
Lincoln City, OR 97367
(541) 557-4192, rps@rpseeley.com

DNA Lineage Project Manager

Walt Seelye
13802 Pine Glen Dr E
Black Forest, CO 80908-3508
(719) 495-4316, seelyew@gmail.com

Seeley Genealogical Society Membership Form

NAME (First, Middle Initial, Last)		TELEPHONE NO.
ADDRESS (Number, Street)		E-MAIL ADDRESS
ADDRESS (City, State, Zip)		<input type="checkbox"/> New Membership <input type="checkbox"/> Renewal
DESCENDANT OF: <input type="checkbox"/> Robert <input type="checkbox"/> Obadiah <input type="checkbox"/> Other (Attached) <input type="checkbox"/> Unknown		NEWSLETTER DELIVERY: <input type="checkbox"/> E-Mail <input type="checkbox"/> Regular Mail
I/we have submitted our Seeley line as far as known to Linda Crocker <input type="checkbox"/> YES <input type="checkbox"/> PLANNING TO or Chris Havnar (contact info above) for inclusion in the SGS Ancestor File <input type="checkbox"/> NO		
MEMBERSHIP OPTIONS: <input type="checkbox"/> ONE YEAR \$10 <input type="checkbox"/> TWO YEARS \$18 <input type="checkbox"/> THREE YEARS \$25 (In U.S. Dollars) <input type="checkbox"/> FIVE YEARS \$36 <input type="checkbox"/> LIFETIME \$125		
MAIL FORM AND MEMBERSHIP FEE TO: Lynda Simmons 125 Parkview Drive Park City, Utah 84098		DONATION: I/we would like to make a donation to SGS in the amount of \$ _____ (U.S.)



Seeley Genealogical Society

% MEMBERSHIP CHAIR
LYNDA SIMMONS
125 PARKVIEW DRIVE
PARK CITY, UT 84098

ADDRESS SERVICE REQUESTED

PRSRT STD
U.S. Postage
PAID
Harrisonburg, VA
PERMIT NO. XXX

Please notify SGS via email at summitkids@gmail.com if the person on the above label is no longer living at this address.

SGS Publications for Order

All checks should be made payable to SGS.

SGS has several publications and research tools for sale.

1. Printed and mailed version of the *SGS Newsletter* (U.S. \$12)
2. *The Descendants of Robert Seeley (1602-1667) and Obadiah Seeley (1614-1657), Generations One Through Five, 1997 Edition* (U.S. \$17)
3. *The Sixth Generation Families, 1995 Edition* (U.S. \$35)
4. *The Seventh Generation Families: Descendants of Robert Seeley (1601-1667) and Obadiah Seeley (1614-1657), 2000 Edition* (U.S. \$35)
5. Set of All Three SGS Publications (above) (U.S. \$85)
6. The SGS CD-ROM -- Revised August 2013 (U.S. \$15) that includes:
 - The Three SGS Publications by Madeline Mills and Katherine Olsen
 - SGS Newsletters from Issue 1 in 1965 through August 2013
 - 1980s Research Rpt. on Obadiah Seeley (New Eng. records), Fred C. Hart, Jr., CG
 - Research Report on Robert Seeley by Alan Phipps, MA, AG
 - 2006 Research Rpt on Obadiah Seeley (old English records), Clifford L. Stott, CG
7. The SRC Document Index (with Change Seven entered) lists documents shelved at the Seelye Research Center (U.S. \$10)
8. The SGS GEDCOM CD is a file of genealogical information from SGS publications and the International Genealogical Index (U.S. \$15)
9. Souvenir Book of 2013 Grand Rapids, Mich. Reunion (U.S. \$30)
 - Item 1 should be ordered from Lynda Simmons
 - Items 2, 3, 4, 5 should be ordered from Terry Tietjens
 - Item 6 from Bob Seeley
 - Item 7 from Pamela Turner
 - Items 8 and 9 from Kathie Olsen

You can find contact information (address, phone number, & email address) on page 15.

SGS Area Coordinators

Area Coordinators help the Query Editor respond to queries. They also help the Membership Chair recruit new members in their areas.

Arizona	Ann Hall, ramonhall@prodigy.net
*California	Christine Havnar
Colorado	Ann Hall, ramonhall@prodigy.net
Connecticut	Ardienne Damicis, adwdmt@aol.com
Florida	Andrew Waber, wabnoles@yahoo.com
*Kansas	Terry Tietjens
Michigan	Paul Seeley, pnseeley@juno.com
Montana	Ann Hall, ramonhall@prodigy.net
*Nebraska	Terry Tietjens
New Mexico	Ann Hall, ramonhall@prodigy.net
New York	Marshall Seelye, am815@localnet.com (Warren, Washington, and Saratoga Counties)
New York	Janet Seely, jseely@frontiernet.net (Genesee and Monroe Counties)
New York	Laura Condie, billaura@aol.com (Southern Tier Counties and Finger Lakes Region)
New York	Liz Alexander, mrsvquest@aol.com (Dutchess County)
*New York	Mary Palley, mary@palley.com (Remainder of N.Y.)
Ohio	Andrew Waber, wabnoles@yahoo.com
*Oklahoma	Terry Tietjens
*Ontario, Canada	Dian Little
*Oregon	Bob Seeley
*Pennsylvania	Jim Seeley
Wyoming	Ann Hall, ramonhall@prodigy.net
*SGS Query Editor	Linda Crocker

Is your state or province missing from the above list? If so, we need you! Contact Kathie Olsen.

*Means address is on page 15