



Seeley Genealogical Society Newsletter

Established 1965

Issue No. 162-2014-04

History ★ Family ★ Research

November 2014

President's Report: Challenges and the Road Ahead for SGS

By Katherine M. Olsen, Seeley Genealogical Society President

This has been a challenging President's Report to write. Over the past couple of months, members of the Seeley Genealogical Society (SGS) Executive Board have grappled with tough questions related to the future of the Society. Let me say up front that SGS is in good shape, and the society remains solvent and committed to its mission to "engage in research, study, verification, discussion, collation, publication, dissemination, and preservation of Seeley information for the Society, for the education and benefit of its members and for posterity (SGS Constitution)."

However, we live in a world today that is very different from the world in which SGS was established. In 1965, genealogical research was done in libraries, courthouses, churches, and archives in person, thumbing through dusty pages in the hope of finding the next big break. It was a world in which even the simplest research questions often required travel over great distances with no guarantees of success. In that world family history societies like ours were essential as they collected and shared extremely difficult to obtain data via relatively easy-to-produce and cheap-to-mail newsletters.

The Internet, a bonanza of genealogical information, has changed all of that. With fewer and fewer organizations across all walks of life choosing to print information, printing costs have soared. At the same time, the volume of mail has decreased to a point that mailing costs have also skyrocketed. Then there's the fact that the Internet has simplified genealogical research to an amazing degree. These three factors have contributed to dwindling membership and soaring expenses for societies like ours. This is the source of the tough questions with which your executive board has grappled these last couple of months.

The annual treasurer's report from Oct. 1, 2013 to Sept. 30, 2014 is in this newsletter. Please take a few minutes to study it. Thanks, as always, goes to SGS Treasurer Sally Seeley for her diligence.

As I mentioned in the August newsletter, SGS is in the precarious position of having spent more money than it has taken in for the past several years. The basic expenses of this organization are not being met with the dues and interest received from the investment of the Johnson Bequest. These expenses include:

- A stipend to help meet expenses at the Seelye Research Center,
- The Ancestry.com fees for queries and research,
- Fees to operate and maintain the website,

- National Genealogical Society dues,
- The SGS Newsletter,
- Administrative and miscellaneous expenses.

All of these are essential to the success of SGS! It is of great concern to me, the elected and appointed officers of SGS, and, I hope, SGS members as well. With input from various members, I would like to propose the following plan to put SGS on a more stable financial footing:

1. SGS will continue to encourage new people to join the society. We need to have more members who are willing to help with the work and pay dues. At least 50 members have died in the past eight years. There are many benefits of belonging to SGS: a quarterly newsletter that contains news about the organization, research tips, responses to recent queries and other pertinent information; publications such as the *Descendants of Robert and Obadiah Seeley* and *Souvenir* books; free queries; genealogical research; a constantly updated database; a website; reunions; and much more! Ask your Seeley friends and relatives (or anyone interested in genealogy) to join! We need

Please See SGS President's Report Page 2



Inside This Issue

Treasurer's Report	3
SGS Elected and Appointed Officer Annual Reports	4
SGS History	6
More Seeley Places	7
Save the Date: SGS 2015 Reunion	8
Charles H. Seeley	10
SGS Queries	11
SGS Officers Contact Information	15
SGS Publications to Order	16



Member: National Genealogical Society

The Seeley Genealogical Society Newsletter

is published quarterly by the
Seeley Genealogical Society

Editor

Paul Taylor

Address newsletter correspondence to:

SGS Newsletter

4901 Seminary Rd. Apt. 1602
Alexandria, VA 22311

Phone: 757-759-9551

email: paul.taylor.va@gmail.com

Announcements

The SGS Newsletter is published every February, May, August, and November. Announcements are published for free and are due to the editor by the 15th of the month preceding publication.

SGS Mission Statement

The Society shall engage in research, study, verification, discussion, collation, publication, dissemination, and preservation of Seeley information for the Society, for the education and benefit of its members and for posterity.

Membership

Membership is open to anyone interested in genealogy, history, or biography; amateur or professional. Although the name Seeley refers to one family surname, SGS counts among its family those with surnames spelled a variety of ways such as Seeley, Seely, Seelye, Sealy, Sealey, Seley, Selye, Seale, Seelee, Seela, Cielely, Cealy, Cilley, etc.

Membership Dues

Effective Oct. 1, 2011 SGS Membership dues are \$10 per year, \$18 two years, \$25 three years, or \$36 five years. Lifetime memberships are \$125. (Dues are in U.S. dollars, and the membership year runs from Oct. 1 to Sept. 30)

Pay all dues to:

SGS Membership Chair

Lynda Simmons

125 Parkview Drive

Park City, UT 84098

(435) 649-9878

summitkids@gmail.com

Seelye Research Center

is co-located with the Seelye Mansion in Abilene, Kan. For more information, contact:

Seelye Research Center, Director

Terry Tietjens

P.O. Box 337, 1105 N. Buckeye

Abilene, KS 67410-0337

Phone: (785) 263-1084

email: seelyemansion@yahoo.com

SGS International Reunions

are held every two years. The next one is scheduled for July 27-29, 2015 in Abilene, Kan. Please advise the editor if your branch or family has plans for a sectional or local reunion in the interim. Others might like to know about it.

Editorial Position

The opinions expressed in this newsletter are the opinions of the writers and do not necessarily reflect the opinions of the Society or the editors, nor are the Society or its editors responsible for errors of fact or opinion. Proved errors will be corrected.

SGS President's Report (Continued From Page 1)

them!

2. SGS will continue to encourage people, especially those who are currently Life Members, to donate to SGS at least as much as the dues which are presently \$10.00 per year. Anyone who has been a Life Member for more than 10 years should especially consider this donation. Because SGS is a Title 501 (c)(3) organization, all donations are tax deductible for those who itemize. I encourage you to set up a regular donation each month/year.
3. SGS will publish the quarterly newsletter *electronically* beginning with the November 2015 issue. We have already piloted this concept with 67 members who receive their newsletters electronically. The issue is available sooner, is available in color, and can be saved to your files instantly. We will be happy to send the newsletter to any email address that members furnish (a grandson, a niece, an office, etc.). Anyone still wishing to receive the newsletter in hard copy may do so but, in order to cover the cost of printing and mailing, will be charged \$12.00 per year. At the present time, the Society is paying \$3.00 for printing and mailing each issue of the SGS newsletter. Each year the actual cost of printing and mailing the newsletter will be evaluated and any increases will be passed on to those who choose to receive a hard copy. Also, SGS will no longer send complimentary printed copies to Genealogical Societies or Libraries. There are currently 25 such organizations receiving the newsletter. If you would like to sponsor such a library, please inform SGS Membership Chair Lynda Simmons (contact info. on page 15).
4. Even with the elimination of newsletter expenses, the society's income from dues is barely enough to sustain it. Our current annual dues are set at \$10.00 per year. They were raised to ten dollars on Oct. 1, 2011. Prior to that, they were \$8.00 per year for nearly 25 years. Eight dollars in 1987, adjusted for inflation, is more than \$16.00 today. Hopefully, long-time life members and others will step

Here is a list of the libraries and societies which currently receive the newsletter:

- Genealogical Forum of Oregon
- Connecticut Society of Genealogists*
- Kansas State Historical Society
- New Brunswick Provincial Archives
- Connecticut Ancestry Society
- Mesquite History and Genealogy Society
- Minnesota Genealogical Society
- New England Historic Genealogical Society
- New Haven Colony Historical Society
- New York Genealogical & Biographical Society
- Southern California Genealogical Society*
- Yakima Valley Genealogical Society*
- Wisconsin State Historical Society
- LDS Family History Library*
- Orange County Genealogical Society
- Allen County Public Library*
- Tulsa Genealogy Center
- Heritage Quest Research Library
- State Historical Society of Iowa (Des Moines)
- Library of Michigan
- Mid-Continent Public Library and Midwest Genealogy Center
- New York Public Library Local History and Genealogy Division
- Library of Congress
- Denver Public Library
- Huntington (NY) Historical Society*
- State Historical Society of Iowa (Iowa City)

*Organizations which receive the soft copy

Please See SGS President's Report Page 3

Does SGS Have Your E-Mail Address?

The Answer Is Probably Not.

News travels fast in the information age, and sometimes it's helpful to immediately reach out to SGS membership.

Please send an e-mail note with your e-mail address to SGS Membership Chairman Lynda Simmons at summitkids@gmail.com

Afraid of spam? Fear not! SGS will not publish, sell, or share your e-mail address and will only reach out to you with important society information.



President's Report (Continued From Page 2)

forward with voluntary donations, but it is my belief that now is the time to consider an adjustment to the dues structure. To be perfectly frank, several of the voting members of the executive board do not agree with me. Still, while this may not be the right time to ask more of current and prospective members, I believe we must at least discuss the issue sooner rather than later. The SGS Constitution and Bylaws require that, to even consider raising dues, a proposed change to the dues structure must be published in two issues of the newsletter prior to the next general membership meeting. That leaves us with the February and May 2015 issues of the newsletter to propose a structure change in dues in order to discuss it at the next general membership meeting in Abilene, Kan. in July 2015. Then the membership can decide whether a change makes sense. To that end, I intend to make such a proposal and place it in the February and May newsletters; then we'll discuss it at the general membership meeting.

5. I also believe SGS should discontinue any new Life Memberships. Money from the life memberships should have been put in a trust and expenses met by the interest received on that trust. This was not done, and in our current economic situation, there is little or no interest generated. Hence, my request for donations to SGS (see option 2 above) from everyone, especially Life Members.

As I said, both options 4 and 5 require approval by elected officers, and publication of the proposed changes in the newsletter at least three months before a general membership meeting where it must be approved by a three-fifths majority. If you would like to contribute to this discussion, please email me (contact info. on page 15).

Until our financial situation is stabilized, expenses incurred in the general operations of SGS will have to come from the Johnson Bequest when the General Fund is depleted.

As I mentioned, this report is the result of difficult deliberations. During our discussions, SGS First Vice President and Publications Editor Paul Taylor said something I want to share:

"I don't know about the rest of you, but the primary reason I am happy to dedicate the required time and resources to the Society and its work is because I want to honor those who came before, and do all I can to preserve and share their story with those who come after. I take inspiration from something Montell Seely said to me once during an interview about why he cared so much about family history. 'My heart is turned to my father's with such an intensity that I want to have everything that I do focus on honoring and showing respect and love for my ancestors,' he said. 'And, as a father, my heart is turned toward my children and grandchildren and I want to have everything I do provide a positive influence on my descendants.'

"Whatever your motivation, thanks to each and every one of you for the work you do on behalf of our family's history. I view it as a gift to my children and their children's children. I hope we can all continue to work together to advance the goals of the Society."

I concur with Paul and his hopes are my hopes as well.

Seeley Genealogical Society Annual Treasurer's Report For the Period Oct. 1, 2013 to Sept. 30, 2014

Beginning Balance, Oct. 1, 2013 \$93,341.84

Receipts

Dues		\$1265.00
LIFE Memberships		\$0.00
Books		
Generation	196.00	
Reunion	155.00	\$351.00
CD's		\$90.00
Research Fund Donations		\$2.00
General Fund Donations		\$50.00
Bank Interest		\$530.40
Sale of Misc. Souvenirs		\$40.00

Total Receipts \$2,528.40

Disbursements

Postage	\$2.24
Supplies	\$16.71
Newsletter Printing	\$2,878.46
Other Printing	\$924.53
Newsletter Postage	\$461.19
Donation to SRC	\$750.00
NGS Dues	\$50.00
Donation to Webmasters	\$125.00
Ancestry Subscription	\$300.00
Burn and Mail CD's	\$139.24
Deposit for 2015 Reunion Venue	\$100.00
Repair Souvenir Book	\$4.00

Total Disbursements \$5,751.37

Ending Balance, Sept. 30, 2014 \$90,118.87

Fund Balances (Included in cash balance)

Research Fund	\$1,160.62
DNA Fund	\$804.00
General Memorial Fund	\$245.00
Johnson Memorial Fund	\$88,144.16
General Operating Fund	\$2765.09

Total Funds \$90,118.87

Distribution

Checking Account	\$14,588.47
CD's #1-4	\$75,530.40

Total \$90,118.87

NOTES:

- The General Operating Fund includes \$1250 from member donations.
- Profit from sale of reunion souvenir books was \$307.38, largely due to the generosity of one member who shipped the books, donating the postage cost of \$212.10 to SGS.

Submitted Oct. 1, 2014 by
Sally Seeley, SGS Treasurer

Annual Report: SGS Membership

Submitted by SGS Membership Chair Lynda Simmons

I am very concerned about the decline in membership in the Seeley Genealogical Society, so I decided to do the following research about our membership. I became the membership chairperson in 2010. The earliest mention of total members I found was in 2008. We had 436 members then. The information below covers the time I have been in office:

August	Members	Life Mbrs	Genealogical Societies/Libraries	New Mbrs
2010	433	159	14/14	14
2011	395	159	14/14	14
2012	392	165	14/14	16
2013	375	165	14/14	15
2014	342	158	12/13	3

The number of members receiving the SGS Newsletter by email has risen to 67, of whom 33 are life members along with three genealogical societies and three libraries.

New members tend to join during our biennial SGS reunions. Relatives and friends tell people about SGS and/or share their SGS Newsletter with them. Others join after interacting with the SGS Website. Still, I am concerned about the small number of new members this year and would love to hear new ideas for encouraging new people to join SGS.

Our declining membership may be caused by our aging population. I try very hard to find each person whose Newsletter is returned. If a person cannot be found, I remove his or her name from the membership

spreadsheet. Another reason for declining membership may be that younger people are not joining organizations as much as older people have in the past. Some believe we may also be giving too much information away for free on the SGS Website, such as Newsletters themselves, meaning that potential members may be getting what they want elsewhere and thus have no need to join. Our dues are very low, so that probably is not a reason for membership decline.

I thought SGS members might like to know what the membership chairperson does. He or she must take care of all incoming mail, record all information about our members on a large spreadsheet, know how to work with a spreadsheet, make an accurate record of funds received, send money and reports to the SGS Treasurer, report to the Board, write articles for the Newsletter, answer any membership questions, send materials to new members, send benefits of membership sheets to people interested in Seeley genealogy, and keep accurate records.

I have enjoyed being SGS Membership Chair. I would love input on how we can encourage people to join SGS. Since new ideas are always important, please think about our membership and send your suggestions to me.



Annual Report: SGS Ancestor File Database

Submitted by SGS Ancestor File Co-Chairs Linda Crocker and Chris Havnar

The Seeley Surname section of the database currently contains 32,345 individuals listed alphabetically from A.B. (b. in 1870, possibly in Ga.) to Zuma Lois (b. in 1892 in Ohio).

The Other Surname section contains 14,386 individuals, descending from a woman born with the Seeley surname, listed alphabetically from James Abate to Sandra Zuklic.

New names are added primarily by researching obituaries (Chris) and queries (Linda). We send each other our work, both to check entries for accuracy and to see whether our individual skills and tools can add to what the other has found. We work well as a team and would accomplish even more if our days were two or three times as long.

In the course of our work we also make corrections to the database. This often means just adding new data to an individual's record, such as a death date, place, or spouse. We also sometimes discover multiple entries that we determine are for the same individual and combine them into one.

The database is an excellent tool for use in researching queries and preserving key vital record information in an easily accessible form.

Annual Report: Chief Genealogist, Query Editor

Submitted by SGS Chief Genealogist, Query Editor Linda Crocker

SGS continues to receive approximately four to six queries per month. The queries are shared in each issue of the quarterly SGS Newsletter. Most come via the Website, some via Facebook, and others occasionally through the mail. The easy ones are usually answered immediately; others take longer.

This year I attempted to keep a query log with mixed success, but it at least was a start. There are a few folks who keep asking for the same information; unfortunately, sometimes the records they need are just not available (or not yet).

All the new or updated information I unearth is simultaneously entered in the SGS Ancestor File. I use my Hotmail account to store all my finished and unfinished work; if something sounds familiar, I can easily search to see whether Chris Havnar or I have already worked on it.

I really appreciate having a full Ancestry.com membership paid by SGS. I also use my printed copies of the Newsletter—fewer windows to open when I am working on a query. I love doing this research and only wish there were more hours in the day for it.

We answer queries from both SGS members and non-members. Send us yours today.

Annual Report: SGS Publications Editor

Submitted via Email by Paul Taylor, SGS Publications Editor

This report covers SGS Publication issues. No decisions are required at this time, but they will need to be addressed at the next SGS Executive Board meeting.

reunion. Additionally, all speakers should provide the associate editor with copies of any slides or visual aids they used.

2015 Souvenir Book

Clearly, I failed to get the 2013 SGS Reunion Souvenir Book done in a timely manner. The demands of a new job and other issues compete for the finite number of hours in the day. Still, I enjoy doing the layout and design and have been happy with the results so far, since each book has been better than the previous one. I would completely understand if there is a desire to find someone else to do the book for the next reunion (if we choose to do one), but I am willing to help with that book. However, what I think will be needed is for someone to serve as the associate editor to collect all articles and thoroughly edit them before passing them to me for layout and design.

In addition to an associate editor, the absolute most essential part of the process begins with presenters and contributors. They MUST provide a clear and thorough narrative version of their presentations. For member presenters I would suggest writing the narrative version well in advance of the reunion but waiting to submit it to the associate editor until after their presentation so they can add any information that comes up during the reunion. As for guest speakers, a written version of their talk should be a requirement of their engagement. Then an SGS member should be assigned to capture information that comes up during discussion following the presentation and include it in the narrative version. If the guest speaker cannot provide a written version in advance, an SGS member should be assigned to record and transcribe the presentation and the Q&A session that follows, as Pam Turner did for Jack Dempsey's presentation at the last

SGS Facebook Page

Despite my on-again, off-again attention to the page, it continues to grow with 297 likes (as of July 14). My goal was for it to have at least as many likes as SGS has members by the 2015 reunion. I believe we have a good chance of reaching that goal. I believe the page raises awareness of SGS, but because all we post is news content, I think we are missing a great opportunity to boost membership by highlighting the Society and its work.

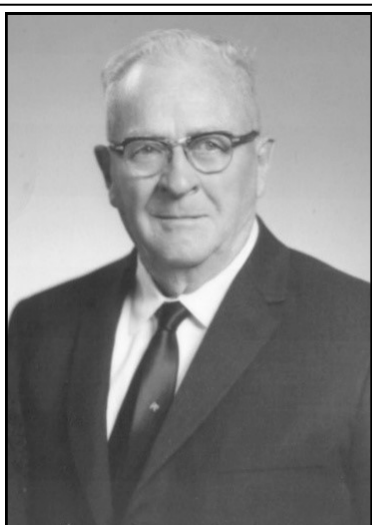
The crux of the problem is finding content for the page. When we started it, we tried assigning topics and a certain amount of input to board members. That met with mixed success. I am open to ideas that result in more content for the page. I am not looking for anything major—just bits about genealogy in general, tidbits of Seeley genealogy (perhaps little chunks of information from the generation books that point back to a page on the Website where people can order copies of the books for more information), bits of information about some of the things in the SRC collections, research tips, information about famous Seeley people and places (Jesse Crisler has created a tremendous amount of content on this topic), etc. For those cases where we have large chunks of content (more than 420 characters like the Seeley people and place vignettes Jesse has created), we do not want to hang that content on the Facebook page but, rather, on the Website and drive people to the site. I hope those in attendance at the July 18 board meeting will discuss ways they and the rest of the Board can contribute to the page to make it a more effective recruiting tool.

A Short History of the Seeley Genealogical Society

By SGS History Committee (Ruthetta Seelye Hansen, Kathie Olsen, Wesley Waring, and James R. Seeley)

The Seeley Genealogical Society was founded by Rev. Garner Osborn in 1965. A native of Burr Oak, Iowa, he was the son of William Osborn and Alice Seelye, 11th generation in descent from Robert Seeley.

Suggesting an association to prevent the "loss of vital family information," he wrote in Issue #1 of the Seeley Newsletter, dated March 1965, "BETWEEN YOU AND ME, LET'S GET STARTED!" He intended to send out four issues "this year," and he did just that. He proposed including all Seeleys "spelled in over 25 different ways." He envisioned a "Board of Directors, some



SGS Founder Garner Osborn

in each region of the nation," and the need to charge annual dues. As the "Interim Editor," he started listing queries in issue #2.

SGS Presidents and Reunions

The first SGS president was Lloyd Seely (1968-1971). The second was DeLoss Seely (1971-1980). The first reunion was held in 1980 in Lyons, Colo., with Donald Eff as president (1980-1983). The second reunion was in Denver, Colo., in 1983 with Robert Cox elected president. He was reelected at the third reunion in 1986 in Ft. Wayne, Ind. Ft. Wayne hosted the fourth reunion in 1989, and Marshall Seelye was elected president. He was reelected at the fifth reunion in Weathersfield, Conn., and again at the sixth Reunion in Salt Lake City, Utah, in 1995. The seventh reunion was held in Saint John, New Brunswick, Canada, in 1997, and Daniel Seelye was elected president. He was reelected at the eighth reunion which was held in Abilene, Kan. At the ninth reunion, held in Tacoma, Wash., in 2001, James R. Seeley was elected president. He was

Please See SGS History Page 6

SGS History (Continued From Page 5)

reelected at the tenth reunion held in Williamsburg, Va., in 2003 and again at the 11th reunion in 2005 held in Abilene, Kan. Katherine M. Olsen was elected president at the 12th reunion in 2007 at Weathersfield, Conn. She was reelected at the 13th reunion in 2009 at Salt Lake City, Utah, at the 14th reunion in 2011 at Horseheads, N.Y., and the 15th reunion in 2013 at Grand Rapids, Mich.

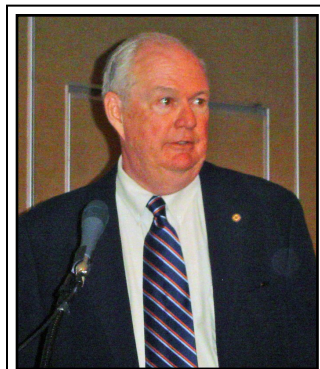
Alan Phipps's Research on Robert Seeley

According to Alan Phipps's research, immigrant Robert Seeley was christened July 4, 1602, at Blumtisham-cum-Earith, Huntingdonshire, England, the son of William Seeley, joiner, of the same place. Phipps stated that "no record in England has been found of Obadiah Seeley as the son of Robert." Phipps believed that Robert's grandparents were Thomas and Elizabeth Seeley who married in 1560 and lived in Great Gransden, England. A copy of this research is on the SGS CD ROM which is available for purchase.



**Alan Phipps,
Genealogist**

Summary of Hart's and Stott's Research on Obadiah Seeley SGS#4



Fred Hart, Genealogist

Fred C. Hart's research focused on New England records. Hart said that "[n]o records were found that directly connected Obadiah Seeley of Stamford with Captain Robert Seeley of New Haven"; "an exact time of his arrival in Stamford could not be determined"; and "having found the baptism of a son named Jonas Seeley . . . I now think it is essential to pursue the development of the family

of William Seeley of St. Martin parish (Birmingham, England) to determine once and for all if his son Obadiah was actually the Stamford settler." Clifford L. Stott's research of English records states, "In 1627/8, Obadiah Seeley, the son of William Seeley of Birmingham, was apprenticed to Nehemiah Wallington of London for the term of nine years to learn the turner's (lathe-furniture) trade." An itemized list, found by SGS member Karl Weiler, of the estate of the Obadiah Seeley who lived in Stamford, Conn., contains several tools of a turner's trade. This and other evidence suggests immigrant Obadiah Seeley (b. 1614) is probably the son of William Seeley of St. Martin parish, Birmingham, England.

SGS DNA Lineage Project

A DNA test project, managed by SGS member Wesley Waring, established once and for all that there was NOT a

close relationship between immigrants Robert and Obadiah Seeley. Later DNA test results have confirmed the lack of such a relationship. Results can be viewed on the Seeley Website.

Significant SGS Events

The Seelye Research Center was established in 1995, based on an agreement signed by Seelye Mansion owner Terry Tietjens and the SGS Executive Board. A list of documents shelved there and their shelf locations is contained on the SGS CD ROM and the Seeley Website.

During the Sixth SGS Reunion in 1995, members voted to hold the reunion every two years instead of every three years. This helped ensure that older members would be able to attend a next reunion.

Adoption of the first SGS Constitution and Bylaws occurred by a vote of membership attending the third SGS reunion in Fort Wayne, Ind., Aug, 21-23, 1986.

The Descendants of Robert Seeley, First Five Generations was compiled by Esther Houtz Walter in 1977. In 1995 *The Sixth Generation Families*, compiled by

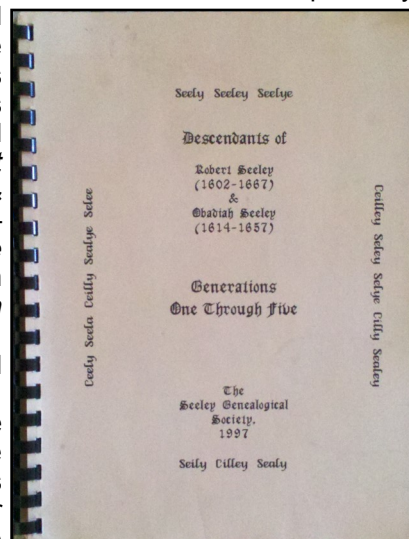
Madeline M. Mills and her daughter, Katherine M. Olsen, was published. In 1997, Mills and Olsen published *Descendants of Robert Seeley (1602-1667) & Obadiah Seeley (1614-1657) Generations One Through Five*. Finally, in 2000 *The Seventh Generation Families*, compiled by Mills and Olsen, was published. The SGS Executive Board decided that due to the size of this volume, no further books on this line will be published by SGS. Several hundred copies of these books have been sold to SGS members and Seeley researchers. They are available on the SGS CD ROM.

The first reunion held outside the U.S. was the seventh, held in Saint John, New Brunswick, Canada, in 1997. It was co-hosted by the Seeleys of New Brunswick under the leadership of Harold Fanjoy. A member of the Canadian Parliament, Elsie Wayne, gave the welcoming address.

In 2003 SGS member W. Paul Taylor compiled and SGS published the first Reunion Souvenir Book. A souvenir book has been published for each SGS reunion since. The book not only serves as a souvenir for those who attended the reunion but also as a compilation of events and decisions made for the information of those members who were unable to attend the reunion.

In 2004 SGS members made a trip to Robert Seeley's England. Organized by Katherine Olsen, the trip took members to places where Robert and his ancestors had lived as well as to many other sites of historical interest.

Please See SGS History Page 11



A Sure Foundation: Seeley Places Continued

Story by Jesse Crisler, SGS Second Vice President

At the 2013 SGS International Reunion in Grand Rapids, Mich., SGS Second Vice President Jesse Crisler gave a fascinating presentation about Seeley places across the country. His presentation was printed in the reunion souvenir book (still a few copies left, by the way; contact Kathie Olsen – contact information on page 15 – for details on how to get yours).

Crisler's extensive research yielded more places than he could include in his presentation, so here's the exciting conclusion featuring eight more Seeley places. Know of any others? Share them with Crisler (contact info. on page 15).

Seley Building—Pacific Log and Lumber, a sawmill on Gravina Island in the bay outside Ketchikan. Ketchikan Gateway Borough, Alaska is owned by timber entrepreneur **Steve Seley**; a victim of the proposed Tongass Highway through the Tongass National Forest, the mill has been closed since November 2011. Headquartered in the Seley Building, the Seley Family Corporation also owns Seaborne Marine Services in Ketchikan.



Seeley-Gilbert House—a large family home by the standards of 1736, when it was built in Easton in Fairfield Co., Conn., the Seeley-Gilbert House recently went on the market for the modest selling price of \$750,000.



Seeley-Dibble-Pinkney House—precisely when this well preserved gray-shingled house in Rowayton, now a section of Norwalk, Conn., in Norwalk Co. on Long Island Sound, was built remains unknown, but in 1820 **Alfred Seeley** (1792-1838), a local grocer, purchased the house which by then at least two generations of the Richards family had inhabited. Perhaps originally an eight-room, two-story saltbox house, it grew over time through many alterations.



Hannah Minerva Seeley (1835-1921), youngest child of Alfred and his wife, Hannah Hoyt (1796-1877), married Alphonso Dibble (1824-1902, and their youngest child, Gertrude Hannah (1869-1967), married William Pinkney (1857-1946); when she died in 1967, the village of Rowayton purchased the house to preserve as an historical structure.

Seeley Lake Historical Museum and Visitor Center—just a mile south of Seeley Lake, Mont. named for **Jasper B. Seeley** (1858-1931), the Seeley Lake Historical

Museum and Visitor Center, housed in a barn built in 1929, features artifacts, contributed by local residents, which depict the harsh conditions of life in northern Montana during its early settlement.



Seely House—built in 1830 in Oyster Bay, Nassau Co., N.Y., by **Dr. Ebenezer Seely** (1782-1860), Seely



house, sometimes referred to as the **Seely/Wright House**, is prominently located on West Main Street. Seely first married Phebe Townsend (1763-1841); **Catherine Summers Seely** (b. 1846), his daughter by his second wife, Rebecca Coles Summers (b. 1810), married Joseph Buffett Wright (1836-1915), an area blacksmith.

Seeley Cottage—one of sixty-three so-called "cure cottages" near Saranac Lake, in Harriettsville, Franklin Co., N.Y.. that have been listed on the National Register of Historic Places, Seeley Cottage was built around 1890. A two-and-half-story Colonial Revival-Queen Anne style building with an open verandah on the first floor and two large cure porches on the roof, it functioned for years as a private tuberculosis sanatorium.



Seeley House—possibly a wedding present, Seeley House was built in the mid-1850s in Fairport, Monroe Co.,



N.Y., by **George Le Grand Seeley** (1824-1911) for his wife, Almira B. Beardsley (1829-1906). Italianate in structure with tall windows, several gables, and a cupola, the edifice has stood well the test of time. A local politician, Seeley owned a hardware store.

Winn-Seeley Gymnasium—named in honor of Janet Seeley (1905-97) and Marcia Winn (1899-?), professors of physical education and dance for four decades at Hobart and William Smith Colleges in Geneva, Ontario Co., N.Y. Winn-Seeley Gymnasium was built in 1970 to house the colleges' athletic program; besides offices for each head coach, the facility features a team meeting room, locker rooms, and the Heron Hall of Honor to which both Seeley and Winn were inducted in the inaugural class of 1997.





SAVE THE DATE!
Our Golden Anniversary
SGS 1965-2015
July 27 – 29, 2015

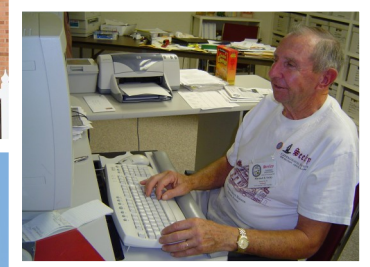


**Historic
 Abilene Kansas**
 Seelye Mansion tours
 Seeley Histories
 Seely Genealogy
 Eisenhower Center
 Heritage Center/Carousel
 Steam train rides
 Trolley rides
 Much more



FUN FOR THE WHOLE FAMILY

Held in conjunction with the 70th Wild Bill Hickok rodeo
 And Central Kansas Free Fair and Parade – July 30 – August 5



REGISTER EARLY (motel rooms will go fast)
 Check out our Facebook page and the SGS Web site
 for registration information as it becomes available!

See You in Abilene! Reunion Plans Taking Shape

Story by Katherine M. Olsen, SGS President

I am really looking forward to our 2015 reunion to be held in Abilene, Kan. Monday, July 27, to Wednesday, July 29, 2015, convening at the Abilene Civic Center (the Historic Union Pacific Depot). I hope you are making plans to join us!!

Be sure to copy the reunion flyer in this issue and share it with all of your relatives!! Registration forms will be in the February 2015 SGS Newsletter. I believe that reunions play a vital role in our society. They give us the opportunity to be together in one place to share friendship and information, and to learn together about our ancestors and their history. And besides that, they are fun!

But it takes a lot of work to put one together. As the President of SGS, I make sure that all the arrangements are made so that the event will be successful. I am

assisted in this responsibility by a very competent committee.

In addition to the general membership meeting, the reunion will feature speakers discussing research reports on the spelling of Seeley/Seelye/Seely/Seela/etc, the history of Dickinson County, Kan., and the Seeley families who settled in Kansas. Plus Debra Seely, an author of young adult books about the history of Kansas, will address us.

Tours will include a visit to the Seelye Mansion, Seelye Research Center, the Dickinson County Heritage Center and Carousel, the Eisenhower Presidential Library, Museum and Boyhood Home, and a train ride on the famous Abilene and Smoky Valley Railroad steam train.

I wish that all of you could be there in Abilene!

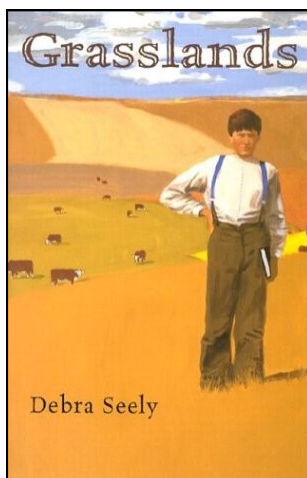
Award-Winning Seely Writer to Speak at Reunion in Abilene

Story by Jesse Crisler, SGS Second Vice President

Members of SGS who attend the Society's golden anniversary reunion in Abilene, Kan., next year have a treat in store. A featured speaker at the reunion will be Debra Seely, a writer of young adult literature, who earned her MFA degree in creative writing from Wichita State University and her MA in English from the University of Kansas.

Seely's first novel, *Grasslands* (2002), which received the Society of Midland Authors Award for juvenile fiction in 2002-03, tells the story of thirteen-year-old Thomas who comes west to a hardscrabble farm on the Kansas prairie to live with a father he has not seen in years. Set in the 1880s, this first-person narrative captures well the rigors of frontier life in a country still relatively untamed. *The Last of the Roundup Boys* (2004), the sequel to *Grasslands*, covers the next chapter in Tom's life when four years later he strikes

out on his own as a cattle hand on a wealthy ranch where he meets free-spirited Evie.



Though Seely recalls that when she was growing up, what she "wanted most was to leave the place I came from, Kansas," she now observes that "it's the place I like best," to which both her books definitely attest. A former junior high and high school teacher, she now writes part-time, while simultaneously volunteering in schools throughout Kansas.

Seely's great-great-grandfather owned a cattle ranch in Kansas, while her husband David's great-grandfather, Ethan A. Seely, came to Kansas from Pennsylvania via Oklahoma during the Dust Bowl era. Ethan, who died at 104, was seventh in descent from Obadiah Seely (Ethan A., Alfred, Benjamin, Israel, Nathaniel SGS# 189, Ebenezer SGS# 63, Jonas SGS# 19, Obadiah SGS# 4).

Lodging Options in Abilene

Compiled by Kathie Olsen, SGS President and Reunion Planning Committee Chair

Since the 2015 SGS Reunion in Abilene, Kan., will be held in the Abilene Civic Center, it is not necessary for everyone to stay in the same hotel; however, you will want to make your reservations early—it will be a busy time in Abilene. In addition to those listed below, hotels are also available in Chapman (12 miles to the east of Abilene), Junction City (25 miles east of Abilene) and Salina (25 miles to the west of Abilene).

- 4-Seasons RV Acres (includes picnic area, pool, lake, cable TV, WiFi)
2502 Mink Rd, www.4seasonsrv.com
(785) 598-2221
- Abilene's Victorian Inn—Bed and Breakfast
820 NW Third, www.abilenesvictorianinn.com
(888) 807-7774
- America's Best Value Inn (includes breakfast)
2210 N. Buckeye, www.abvi.com
(785) 263-2050

- Budget Lodge Inn (includes breakfast)
116 NW 14th, www.budgetlodgeinn.net
budgetlodgeinn@yahoo.com, (785) 263-3600
- Covered Wagon Campground (includes picnic area, pool, cable TV)
803 S. Buckeye, www.coveredwagonrvpark.com
(785) 263-2343
- Diamond Motel (includes breakfast)
1407 NW Third, www.diamondmotel.com
diamondmotelkanas@gmail.com, (785) 263-2360
- Holiday Inn Express and Suites (includes breakfast, hot tub, and pool)
110 E Lafayette, <http://ow.ly/B8vWM>
abilxpres@eaglecom.net
(785) 263-4049, 1-800-Holiday
- Super 8 Motel <http://ow.ly/B8zjA>
2207 N. Buckeye, super8abilene@yahoo.com
(785) 263-4545, 1-800-800-8000

Charles H Seeley, The Heaviest Man in Bradford County, Pa.

Story by Linda Crocker, SGS Chief Genealogist

Last year I was given an article about Seeley's Oyster Bay Hotel in Towanda, PA. The article said Charles H Seeley was known as the heaviest man in Bradford Co., that he served in the 126th Reg't of NY Volunteers in the Civil War and that he sold the hotel to Joseph Ochs in 1891.

I found the owner, Charles H. Seeley in the 1880 census of Towanda, age 41, b. NY, NY, NY, hotel keeper with wife Margaret, age 30, b. PA, PA, PA. I was having difficulty identifying him in earlier census records (more than one Charles of that approx. age) and couldn't find him in 1900. Finally, I found an online version of the Sullivan Co., PA, Review of Jan-Mar. 1899 and a later article from 1907.

Sullivan Review

Feb. 9, 1899

Major Charles H. SEELEY, of Forksville, the well known and popular hotel man was frightfully injured by the explosion of a gas machine in the cellar of his hotel at Forksville on Saturday evening. A new gas machine was being installed and Mr. Seeley was inspecting it; a match was struck to furnish light when a terrific explosion occurred. Mr. Seeley suffered a broken leg and several bad burns and cuts about the body, his most serious injury being a terrible cut across the abdomen. His son, Charles SEELEY, was deafened and stunned by the explosion.

March 2, 1899

Charles H. SEELEY died at his home in Forksville, Tuesday Feb. 28, aged 62 years. The funeral and interment will be at Forksville on March 3 with Masonic honors. He was born in Clinton, Oneida Co., NY. He served as a member of the 126th Rev. NY Volunteer Infantry and served in the VA campaigns. In 1873 he located in Towanda and embarked in the hotel business, building what is now known as the Ochs House. In 1890/1 he retired to his farm near Vestal, NY. In 1893, he purchased the Forksville House. He was one of the heaviest men in the state, tipping the scales at 437 pounds. A wife and son survive.

Jan. 29, 1907

The Seeley House, the only hotel in Forksville, was burned to the ground early Sunday morning, very little of the contents being saved. The fire is said to have originated around the chimney leading from the big heater in the cellar. The stand has been a hotel so long that the memory of the man runneth not to the contrary. About fifteen years ago it was purchased by the late Charles Seeley, and almost entirely rebuilt, and was made modern in every aspect. After his death it came into the hands of Mr. Murray of Athens, and for the past six or seven years has been run by P. M. Scanlin, who conducted a very good hotel. We understand that the building and its contents were insured for about \$3,000, and that the chances of its being

rebuilt are very slim. A volunteer fire brigade was hastily organized and some very good work done in saving the surrounding buildings.

From Findagrave.com

- Charles H Seeley, b. 1837, d. 28 Feb 1899, 126th Rev. NY Volunteer Infantry
- Burial: Fairmount Cemetery, Forksville, Sullivan County, PA
- Find A Grave Memorial# 40313207

Civil War Pension Files

- Charles H Seeley filed for an invalid pension 30 Jul 1890 in NY. His widow, Margaret A Seeley, filed for a widow's pension 22 June 1899 in PA

From Wikipedia

- The Village of Clinton, site of Hamilton College, is within the Town of Kirkland. The village was known as the "village of schools" due to the large number of private schools operating in the village during the 19th century.

1850 census of Kirkland, Oneida, NY

- Seeley, Harvey, age 40, b.

NY, blacksmith

- Seeley, Huldah, age 44, b. NY
- Seeley, DeLoss, age 22, laborer, Louisa, age 13, Charles, age 13, all b. NY

1892 census Vestal, Broome, NY

- Seeley, Charles H, age 54, farmer
- Seeley, Margaret, age ??
- Seeley, Charles F, age 10

1900 census Athens, Bradford, PA

- Seeley, Margaret, b. Jun 1845, PA, PA, PA, widow, 1 child, 1 living
- Seeley, Charles S, b. Aug 1881, PA, PA, PA, day laborer

WWI Draft

- Charles Frederick Seeley of Athens, Bradford, PA, b. 20 Aug 1881, laborer for Lehigh Valley RR, names Mrs Hollie Seeley of same address as next of kin

PA Marriages

- Charles F Seeley of Athens, PA, md. Hallie M Grant of Athens 5 Jun 1918, at the home of Mary Grant by David R Evans, minister, First Presbyterian Church, Athens.

PA Death Certificates

- Hallie M Grant Seeley, b. 27 Jul 1880, PA, died 10 June 1919 at Athens, Bradford, PA, of TB, housewife, dau. of Clark Grant, b. NY, and Mary Rockwell, b. Nova Scotia, buried Tioga Point Cemetery, Athens, Bradford Co., NY

I haven't been able to identify Charles Frederick, son of Charles H Seeley, in later census records or find a death record for him. However, Harvey, father of Charles H. is SGS #1952.



Seeley House About 1908 Forksville, PA Known as the Forksville House Before Its Purchase in 1893 by Charles H. Seeley. Source: An Old Photo Reprinted in the Sullivan Review on April 26, 2007.

SGS History (Continued From Page 6)

In 2007 SGS members toured New England after the SGS reunion at Wethersfield, Conn. Also organized by Katherine Olsen, the tour visited sites where both Robert and Obadiah Seeley had lived. An excellent description of this tour, "A Tour of Robert and Obadiah's New England," by SGS member LeAnne Seely is contained in the 2007 SGS Reunion Souvenir Book and the Nov. 2007 SGS Newsletter.

In 2012 the estate of deceased SGS members Robert Seeley Johnson and his wife, Evelyn R. Johnson, gave the Seeley Genealogical Society a bequest of \$88,919.16.

The SGS Ancestor File

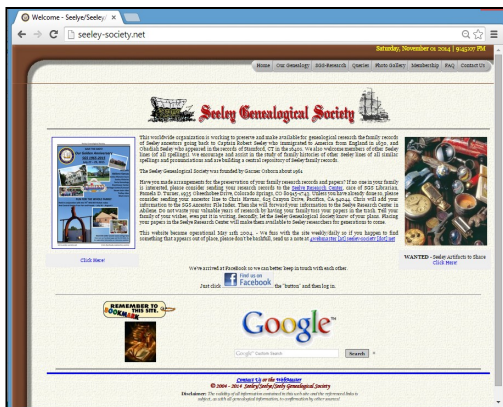
The SGS Ancestor File is a system for storing basic data about all Seeleys of any spelling and their descendants. There are two components—the Seeley Surname database and the Other Surname database for the descendants of Seeley women. The current database grew out of a system John Seely devised in 1982 as an index to information on members of the Seeley family. In 2002 Dan Seelye converted John's original database into a Word document, and John continued to work with it. In 2008 Bob Crocker converted the Ancestor File into an Excel database, and Linda Crocker and Chris Havnar took over its management. At that time the Ancestor File was moved to storage on Dropbox, a cloud-based service that enables both Linda (in West Virginia) and Chris (in California) to update the file. The contents come from submissions by members and/or research and includes birth, death, marriage, and parent information as well as connection to Robert or Obadiah (if known). As of July 2014 the Seeley Surname database contained information on 32,345 individuals, and the Other Surname database contained information on 14,386 individuals.



John Seely, Creator of the SGS Ancestor File

The Seeley Genealogical Society Website

The SGS website at www.seeley-society.net may be viewed as the Society's scrapbook. It was initially developed by former SGS President Daniel Seelye. Members Jerry and Chris Havnar took over the website in May 2004 and changed it to reflect



technological advances. The second page of the website contains genealogical information, obituaries of all spellings, biographies in the public domain, wedding announcements, veteran information, directories, and vital records. The third page is a link to SGS-sponsored research, including DNA tests. On the fourth page is a listing of queries, answers, and updates dating back to 2000. Finally, the website advertises SGS publications currently available, published errata to those books, information on SGS reunions, information shelved at the Seelye Research Center, "In Memoriam" of SGS members, and information on how to become a member of SGS. The Havnars were recognized as the outstanding SGS volunteers for the period 2011-2013 for their work on the website and many other contributions to SGS.

Facebook as a Communication and Recruiting Tool for SGS

SGS First Vice President W. Paul Taylor established SGS on the Facebook social media site in 2011 in order to keep members informed of current SGS events, provide genealogical information of interest to members, and furnish a tool for possibly attracting new members to the Society.

SGS Queries

*Coordinated and Compiled by SGS Query Editor
Linda Crocker
(Data Current as of Oct. 17, 2014)*



Query number is 2 digit year, 2 digit month of Newsletter, query sequence number.

Please send your queries to SGS Query Editor Linda Crocker at llbc100@msn.com, or mail to Linda at home (see inside back cover). Queries are assigned a query number by the Query Editor, researched and then sent to the Query Team and Area Coordinators for their input. Linda

summarizes each query and any responses for inclusion in the Newsletter.

If you have any information on the queries below, contact the submitter but also remember to send a copy of the information to Linda, so the query can be updated in the next Newsletter.

Query Updates

Update to Query 0808-5 Re: Austin Seeley and Lucy Ann Vaughn

We continue to get requests for information on the ancestors and descendants of Austin Seeley who spent many years in Nova Scotia working in the lumber industry. He married Lucy Vaughn there in 1836/7, and

Please See SGS Queries Page 12

SGS Queries (Continued From Page 11)

they had 7 children. The family moved to Ontario and then on to Illinois. Census records of Austin's children indicate he was born in NY or MA. It is believed that Austin was born about 1803 and died sometime in the 1850s.

The latest query is from Daryl Abbott (carefreedaryl@icloud.com). His line of descent is Austin, Walter Austin, Charles Burrell, Nyla Garnet. Nyla is Daryl's mother. Daryl says that family stories indicate that Austin died in a logging accident in the northeast US.

While looking into this (again), I saw that we had data on Walter Austin and Charles Burrell Seeley, but I found new information on some of Austin's other children.

Illinois Marriage Index

- Sears, John C Seeley, Jane 1863-07-07
- Prout, N E Seeley, Lucy A 1864-03-24
- Seeley, James W Epperson, Louise 1866-04-03
- Seeley, James W Epperson, Mary L 1871-12-27

1870 census Liberty, Johnson, IA

- Prout, Nathan S, age 50, b. CT, farm renter
- Prout, Lucy, age 30, b. New Br.
- Seely, Benj, age 18, b. Cape Britten

1880 census Pleasant Valley, Johnson, IA

- Prout, Nathan C, age 52, b. CT, NY, NY
- Prout, Lucy, age 50, b. New Br, New Br, New Br
- Graham, Forbes, age 45, single, farmer, boarder, b. OH, IRE, IRE

1900 census Waukesha, Waukesha, WI

- Seeley, Benjamin F, b. May 1852, Nova Scotia, ME, Nova Scotia, locomotive engineer, md. 21 yrs. to
- Seeley, Sarah E, b. Mar 1850, OH, ENG, VA, 2 ch., 2 living
- Seeley, Edna D, b. Oct 1879, stenographer, Jessie M, b. May 1885, both b. IA, Nova Scotia, OH

1910 census Deer Park, Spokane, WA

- Seeley, Benjamin F age 58 b. CAN, ME, CAN, engineer - lumber mill, md 31 yr
- Sarah E age 59, 3 ch, 2 living, Edna D age 28 and Jessie M age 23 are listed in a supplemental 1910 census of Deer Park)
- In 1910 Jessie Seeley age 24 b. IA, CAN, OH is also listed as a stenographer for an abstract co. living in a boarding house in Prosser, Benton, WA

1930 census Seattle, King, WA

- Seeley, Sarah, age 80, wid., b. OH, ENG, VA
- Seeley, Edna D, dau., age 44, b. IA, CAN, OH, bookkeeper for furnace co
- In 1920 Sarah and Edna were also in Seattle. Sarah's niece Helen Finch, age 35, b. IA, OH, OH, was living with them along with Phil Miller, a roome,r age 26, b. TX, US, US

1940 census Seattle, King, WA

- Seeley, Edna D, age 58, b. IA, manage antic and household

Iowa Birth Index

- Jesse M Seeley, b. 27 May 1885, at Grinnell, Poweshiek, IA, to Benjamin Seeley b. OH and Sarah E Jordan, b. OH

Washington Death Index

- Sarah E Seeley, d. 4 Feb 1939, at Seattle, King, WA, age 88; father, John J Jordan, mother, Jane Starkey, spouse Benjamin Seeley

Social Security Death Index (SSDI)

- Edna Seeley, b. 13 Oct 1879, d. Sept 1964, at Seattle, King, WA

Daryl has lots of information on Charles Burrell Seeley and family photos, including one of Walter Austin Seeley. Contact him for that information, and contact your query editor if you have any new information on the origins of this Austin Seeley.

New Queries

1411-1 Submitted by Kari Madden (Kari@richardallenjewelers.com)

Kari emailed me that she works for the Richard Allen Co., a jewelry and antiques dealer in Hoffman Estates, IL, a northwestern suburb of Chicago. She said that they recently were fortunate enough to come across an item belonging to Bertha Wagner Seely. Kari was hoping to learn a little more about her family history.

SGS Response: There is a Bertha Elmira Wagner, b. 1865, in Cressona, Schuylkill Co., PA, md. Lloyd Horatio Seely in 1890, had 3 children, lived in Hazleton, Luzerne, PA, divorced between 1910 and 1920. She had 3 children who lived to adulthood. Her father, Andrew Wagner, was a tinsmith.

From findagrave.com

- Bertha Elmira Wagner Seeley
 - B. 1865, PA; d. 14 Jul 1920
 - Wife of Horatio L. Seeley
 - Parents: Andrew B. Wagner (1840 - 1917) and Emeline Berger Wagner (1843 - 1895)
 - Siblings:
 - Charles Lincoln Wagner (1861 - 1936)
 - John F. Wagner (1863 - 1940)
 - Elmer Edward Wagner (1868 - 1957)
 - Robert M. Wagner (1874 - 1885)
 - Chester A. Wagner (1880 - 1949)

Bertha is buried at Vine Street Cemetery, Hazleton, Luzerne, PA.

However, I was a little concerned that there didn't seem to be anything to tie Bertha to the Chicago area.

When I sent Kari this information, she responded, asking about Bertha's being the granddaughter of George Washington, noting that she saw this on our Website. I asked her to send me the link since I wasn't finding it myself. She sent me to <http://www.seeley-society.net/bios-ly/bio-berthawarnerseely.html>, and then she realized she was actually interested in Bertha Warner Seely! This is a good example of how easy it is to go down the wrong path.

Here is Bertha Warner Seely's bio:

SEELY, Bertha Warner, 660 Lexington Av., New York City

Sec. Y.W.C.A. ; b. Cummington, Mass., Sept. 19, 1883; dau. Charles D. and Susan L. (Warner) Seely; ed. Brockport (N.Y.) State Normal School: Bryn Mawr Coll., A.B. '05. Private sec. Bryn Mawr Coll., 1905-07; sec. Horace Mann High School, N.Y. City, 1907-12; sec. Dep't of Conventions and Conferences of Nat. Board of Y.W.C.A., 1912-13. Mem. Woman's Trade Union League, Caroline Club for Social Workers. Congregationalist (John William Leonard, ed., Woman's Who's Who of America, A

Please See Queries Page 13

SGS Queries (Continued From Page 12)

Biographical Dictionary of Contemporary Women of the United States and Canada 1914-1915, New York: The American Commonwealth Company, 1914: 729).

[Granddaughter of George Washington SGS # 2739 – Bertha Warner; Charles DeLoss; George Washington (# 2739); Loren/Lorin; Benjamin; Benjamin; Joseph; John; Nathaniel; Robert]

Of course, this isn't THE George Washington. Bertha's grandfather is George Washington Seely. From earlier research, we know that Bertha married George Quincey Dunlop and died by the time of the 1930 census. She had a daughter, Mavis Helen Dunlop, b. in IN. Further research led me to Bertha's obituary, Mavis's wedding announcement, and Mavis's obituary. Family members lived in Rochester, NY, Cleveland, OH, and Indianapolis, IN, which makes the jewelry turning up in the Chicago area seem more plausible.

Additionally, I did some more research on the other Bertha: Bertha Wagner Seely. It turns out that she was the first wife of Lloyd Horatio Seeley, grandson of SGS# 1924 Dr. Lloyd Seeley of CT.

1900 census Hazleton, Luzerne, PA

- Seeley, Horatius L, b. Apr 1869, PA, PA, PA, confectionary salesman, md. 10 yrs. to
- Seeley, Elmira, b. Oct 1866, PA, PA, PA, 4 ch, 3 living
- Seeley, Helen, b. Jun 1891, Arthur, b. Dec 1897, Florence, b. Feb 1899, all b. PA, PA, PA (The family was also together in Hazleton in 1910: Loyd H Seely, Bertha E, Hellen J, Arthur L and Florence A.)

1920 census Hazleton, Luzerne, PA

- Seeley, Elmira B, age 54, divorced, b. PA, PA, PA
- Seeley, Helen J, age 28, ins. co. cashier, Arthur L, age 22, transit man for engineering corps, Florence A, age 20, stenographer for supply co., all single, all b. PA, PA, PA
- Wagner, John F, brother, age 56, tinsmith

We didn't have Bertha's name in the SGS Ancestor File nor her son Arthur nor complete information on her grandchildren.

If you would like more information on either Bertha or one of these families I'm happy to send it to you.

Query 1411-2 Submitted by Scott Llewellyn (sbllewellyn@gmail.com)

Scott is a descendant of Horace Clinton Seely (SGS 3671d) and his 2nd wife, Friedericka Amelia Kornbau Grater Seely. You can read about this family in the Chief Genealogist Report November 2011 SGS Newsletter and an update in the August 2012 SGS Newsletter. Scott is still trying to find a death date and place for his great-grandmother Friedericka, last known to be living in Upper Darby, Delaware, PA, with her son Paul Waldo Seely at the time of the 1940 census. Scott also asked whether we could find a death date for Isabella Jane Seely, oldest daughter of Horace and his first wife, Anna Virginia (Jennie) Mullen Seely.

SGS Response:

PA Death Certificate

- Isabell Seeley/Seely, single, age 54, dau. of Horace C Seely, b. IN, and his wife, Virginia, b. Philadelphia, d. 19 Jul 1929, at Philadelphia Hospital, Byberry, of chronic myocardial degeneration and chronic nephritis. The informant was Mrs Horace C Seely. Isabell was

buried at Mount Vernon Cemetery (Philadelphia) on 23 Jul 1929.

I was unsuccessful in finding death information for Friedericka.

Query 1411-3 Submitted by Wayne Boyd (wayneandbecky@yahoo.com)

Wayne is looking for photos, family information, books, stories, etc., for his second-great-grandmother, Caroline Frances Seeley. Caroline was born 23 May 1834 in NY to Jesse and Prudence Brown Seeley. He knows that Caroline was married in Medina Co., OH, on 25 Jan 1853, to Wellington Lappin, that they lived in Franklin Co., TN in 1870, that Wellington died there 25 Apr 1882, and is buried in the Lappin Cemetery. Caroline died in 1913 and is also buried in Lappin Cemetery. The 1900 Census shows Frances C. in Medina Co., OH, married to Rufus A. Low (17 years). Rufus died in 1902 in OH.

SGS Response:

From findagrave.com

- Rufus Anthony Low
 - B. Feb., 1828, Granger, Medina Co., OH; d. 1 Nov 1902, Granger, Medina County, OH
- Rufus Anthony Low, son of Hiram Low and Anna, was born in Feb 1828 in Granger. He died 1 Nov 1902. He married Francis Caroline (Seeley) Lappin, daughter of Jesse Seeley and Prudence Brown, on 25 Nov 1884 in Medina Co., OH (Vol. F p. 247). She was born on 23 May 1834 in New York. She died 9 Jun 1913 in Marion Co., TN. Earlie, he had married Elizabeth Prudence Seeley, daughter of Jesse Seeley and Prudence Brown on 9 Sep 1857 in Medina Co., OH (Vol. C p. 127). She was born about 1835 in Carlisle, Schoharie, NY. She died 9 Mar 1884, at her home (Granger).

Rufus A. Low's will (Medina Co. Probate Court)

- Frances C Low listed as widow; Ella Porter of Medina, OH, R. F. D. No. 3, listed as daughter; Elmer, Dasie, and James Porter listed as his three grandchildren; Rufus listed as resident of Granger.

Death notice in Medina Gazette, 6 Nov 1902, p. 6

- *Lowe--At home in East Granger, Nov. 1, Anthony Lowe, aged 73 years. Funeral Nov. 4 at the house; burial at East Granger Cemetery.*

Obituary in Medina Gazette, 13 Nov 1902, p. 6

- *R. A. Lowe did at his home, Nov. 1, after an illness of four weeks. He has been a resident of this place for a goodly number of years. The funeral was largely attended. The services were conducted by Rev. W. A. McCartney, of East Granger. He was buried at East Granger.*

1870 census Granger, Medina, OH

- Low, Anthony, age 40, farmer, b. OH
- Low, Elizabeth age 35, b. NY
- Low, Ella, age 9, b. OH

1880 census Granger, Medina, OH

- Low, Rufas A, age 57, b. OH, NY, NY, farmer, md.
- Low, Luella, age 19, dau., b. OH, OH, OH

1900 census Granger, Medina, OH

- Porter, Otis E, b. Feb 1863, OH, PA, OH, day labor, md. 13 yrs to
- Porter, Luella, b. Feb 1863, OH, Oh, NY, 3 ch., 3 living
- Porter, Elmer L, b. June 1887, Daisy T, b. Jul 1889,

Please See Queries Page 14

SGS Queries (Continued From Page 13)

James A, b. Oct 1896, all b. OH, OH, OH

Next home

- Low, Rufus, b. Feb 1828, OH, NY, NY, farmer, md. 17 yrs to
- Low, Frances C, b. May 1833 NY, NY, NY, 0 ch, 0 living

1860 census York, Medina, OH

- Lapin, Willington, age 29, farmer, b. OH
- Lapin, Caroline, age 25, b. NY
- Lapin, Jesse, age 7, Duran,t age 5, Idelbert, age 4, all b. OH
- Patterson, Margaret, age 76 b. VT

1870 census District 10, Franklin, TN

- Lappin, William, age 41, farmer, b. OH
- Lappin, Carolin, age 36, b. NY
- Lappin, Joseph, age 17, Robert, age 15, Idelbert, age 13, Harmon, age 6, Larua ,age 4, Arther age 3, all b. OH

1880 census District 12, Marion, TN

- Lappin, J M, age 26, b. OH, OH, OH, farming
- Lappin, Martha, age 26, b. TN, TN, TN
- Lappin, Frank, age 2, b. TN, OH, TN; Caroline E age 6 mos. b. TN, TN, TN
- Lappin, Caroline F, age 48, mother, b. OH, NY, NY
- Lappin, Harmon G, age 17, brother, farming, b. OH, OH, OH

1910 census Civil District 4, Marion, TN

- Lappin, Jesse, age 56, b. OH, OH, NY, farmer, md. 34 yrs. to
- Lappin, Martha E, age 56, b. TN, TN, TN, 9 ch., 9 living
- Lappin, Mattie E, age 18, Bertha, age 16, William M, age 12, all b. TN, OH, TN
- Lowe, Francis C, mother, age 75, wid., b. NY, NY, NY

Caroline Frances and Elizabeth are both daughters of Jesse Seeley and his wife, Prudence Brown. Their line is Jesse, David, Jesse, Samuel, Nathaniel, Nathaniel, Nathaniel, Nathaniel, Robert. David, their grandfather, is SGS# 1993.

If anyone has family memorabilia to share with Wayne, please contact him at the address above.

New Query 1411-4 Submitted by Gayle Ann Livecchia (gayle.ann.livecchia@gmail.com)

Gayle recently found the grave of Maj. Samuel Sayre, son of Thomas Sayre and Susannah Seeley of Goshen, Goshen, NY in Stanhope Union Cemetery. The cemetery is rather odd in that it is in western Morris Co., but the town of Stanhope is in southern Sussex Co. During a visit, Gayle saw a downed stone, and with her husband cleaned it off. She researched the name, based on the birth date. Samuel Sayre's first wife was Mary Cooper. Her father, Nathan, ran a grist mill in what was then Black River, NJ, and is today Chester, NJ. The mill was restored and is now part of the Morris Co. Park system. His second wife, buried next to him, was Margaret Stone of Woodbridge, NJ, where he ran a tavern and inn. Per a deed in the Morris Co. Courthouse, he was back in Orange Co. in 1802.

A woman and her two daughters have been the only women to join DAR under him. This woman told Gayle that she did not list a death date for Samuel because she could not find a solid source. A 1901 book by Thomas Banta, *Sayre Family: Lineage of Thomas Sayre, a Founder of*

Southampton, lists his death date as December 1802, but it contains no sources. Someone at DAR National handwrote "Cumberland County, NJ 1802." No one knows from where this information came from; Cumberland Co. is in the southern part of the state. Gayle wrote to the historical society in Cumberland Co. They List a Samuel Sayre on county tax rolls, but not until 1807. Margaret's stone reads, "Margaret Stone consort of Samuel Sayre." Samuel's stone indicates that he died in 1816, and, given that her stone reads "consort" not "relic," Gayle is inclined to accept the 1816 date.

According to Gayle, the original stones are very weathered, so she asked her Congressman for assistance in getting a VA stone. The stonemason for the cemetery transcribed Margaret's stone verbatim on the back of the VA stone, so both graves will be preserved. The Congressman is dedicated the new stone on Oct. 24. Although she is not related to Samuel, Gayle would like to know more about him. She says there just doesn't seem to be a lot of information about him, even in militia records.

SGS Response: We have Samuel Sayre, b. 5 May 1741, with his two wives listed as SGS# 444. We don't have a death date for him or information on his descendants. His mother, Susannah Seeley, is SGS# 176. Her line is Susannah, Samuel, Jonas, Obadiah. It sounds as though Samuel was named after his mother's father. There are quite a few other Sayres who married into the Seeley family as well. If you have information about Major Samuel Sayre, please let me know.

How to Submit a Query

If you would like to submit a query, please follow a few guidelines:

Be specific and detailed: Give all the information you have about the person or family in question, especially dates and locations.

What resources have you already consulted? SGS publications or website? The census? Cemetery records? County histories? Family Bible? Others? (Specify.)

What exactly do you want to know? Parents' names and details? Sibling information? Information on a family marrying into the Seeley family? Our sources?

After your query is printed, please keep us informed about any information you receive or further progress you make on your own. Other members may be interested in or related to your line.

We will publish an update to your query with any new information we receive. This may lead to even more information. One more name, date, or place may be the key to linking your line to another. Your query will also be posted on our website. Make sure we have your current contact details; sometimes we get new information months or even years after your query appears.

How to Answer a Query

If you have information to share on queries from current or past issues, send it to the query submitter and also to Linda Crocker, Query Editor. **Please include the Query number**, preferably in the subject line of your email. Remember to cite your sources.



Seeley Genealogical Society

% MEMBERSHIP CHAIR
LYNDA SIMMONS
125 PARKVIEW DRIVE
PARK CITY, UT 84098

ADDRESS SERVICE REQUESTED

PRSRT STD
U.S. Postage
PAID
Harrisonburg, VA
PERMIT NO. XXX

Please notify SGS via email at summitkids@gmail.com if the person on the above label is no longer living at this address.

SGS Publications for Order

All checks should be made payable to SGS.

SGS has several publications and research tools for sale.

1. *The Descendants of Robert Seeley (1602-1667) and Obadiah Seeley (1614-1657), Generations One Through Five, 1997 Edition* (U.S. \$17)
2. *The Sixth Generation Families, 1995 Edition* (U.S. \$35)
3. *The Seventh Generation Families: Descendants of Robert Seeley (1601-1667) and Obadiah Seeley (1614-1657), 2000 Edition* (\$35)
4. Set of All Three SGS Publications (above) (U.S. \$85)
4. The SGS CD-ROM -- Revised July 2011 (U.S. \$15) and includes:
 - Folder A: the three SGS publications by Madeline Mills and Katherine Olsen
 - Folder B: All SGS Newsletters Through August 2013
 - Folder C: 1980s Research Report on Obadiah Seeley (New Eng. records), Fred C. Hart, Jr., CG
 - Folder D: Research Report on Robert Seeley by Alan Phipps, MA, AG
 - Folder E: 2006 Research Rpt on Obadiah Seeley (old English records), Clifford L. Stott, CG
5. The SRC Document Index (with Change Seven entered) lists documents shelved at the Seelye Research Center (U.S. \$10).
6. The SGS GEDCOM CD is a file of genealogical information from SGS publications and the International Genealogical Index (U.S. \$15)
7. Souvenir Book of 2013 Grand Rapids, Mich. Reunion (U.S. \$30)

Items 1, 2, and 3 should be ordered from Terry Tietjens, item 4 from Bob Seeley, item 5 from Pamela Turner, and items 6 and 7 from Kathie Olsen. You can find contact information (address, phone number, and e-mail address) on page 15.

SGS Area Coordinators

Area Coordinators help the Query Editor respond to queries. They also help the Membership Chair recruit new members in their areas.

Arizona	Ann Hall, ramonhall@prodigy.net
*California	Christine Havnar
Colorado	Ann Hall, ramonhall@prodigy.net
Connecticut	Ardienne Damicis, adwdmt@aol.com
Florida	Andrew Waber, wabnoles@yahoo.com
*Kansas	Terry Tietjens
Michigan	Paul Seeley, pnseeley@juno.com
Montana	Ann Hall, ramonhall@prodigy.net
*Nebraska	Terry Tietjens
New Mexico	Ann Hall, ramonhall@prodigy.net
New York	Marshall Seelye, am815@localnet.com (Warren, Washington, and Saratoga Counties)
New York	Janet Seely, jseely@frontiernet.net (Genesee and Monroe Counties)
New York	Laura Condie, billaura@aol.com (Southern Tier Counties and Finger Lakes Region)
New York	Liz Alexander, mrsvquest@aol.com (Dutchess County)
*New York	Mary Palley, (Remainder of N.Y.)
Ohio	Andrew Waber, wabnoles@yahoo.com
*Oklahoma	Terry Tietjens
*Ontario, Canada	Dian Little
*Oregon	Bob Seeley
*Pennsylvania	Jim Seeley
Wyoming	Ann Hall, ramonhall@prodigy.net
*SGS Query Editor	Linda Crocker

Is your state or province missing from the above list? If so, we need you! Contact Kathie Olsen.

*Means address is on page 15